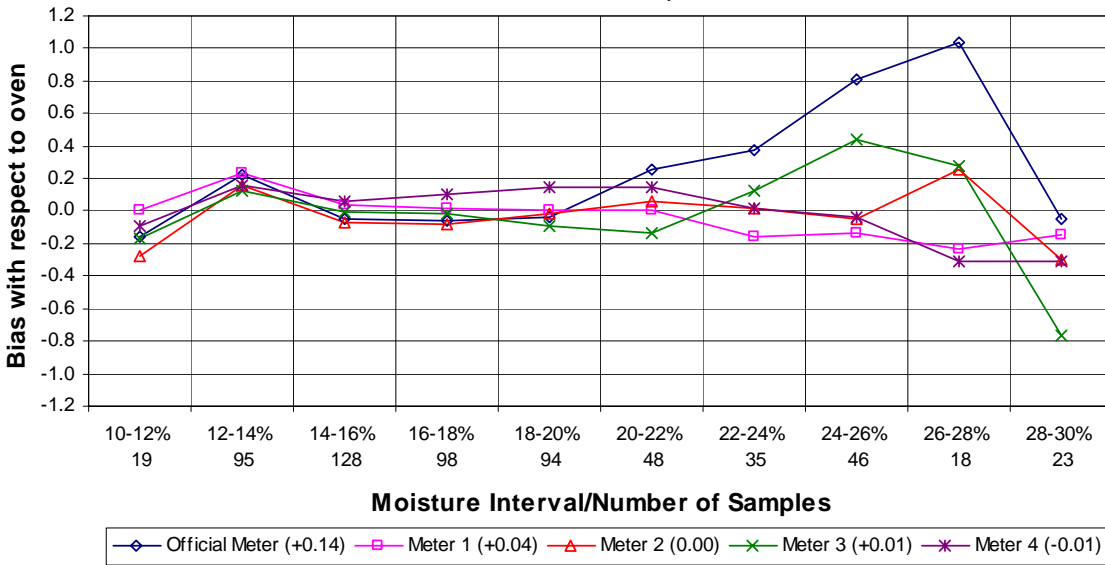


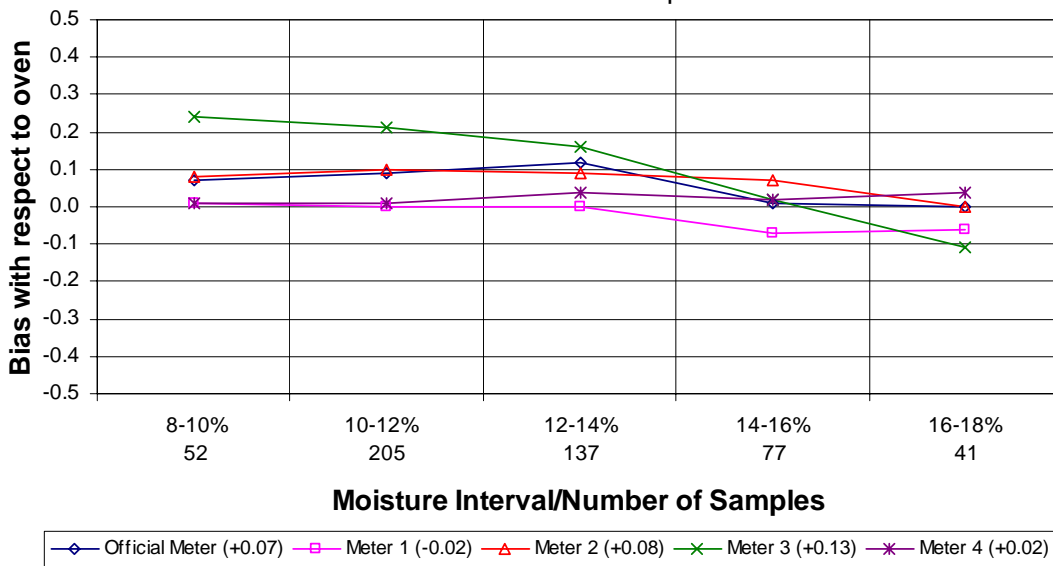
Moisture Meter Comparison - Corn

2003 - 2005 Crop Years

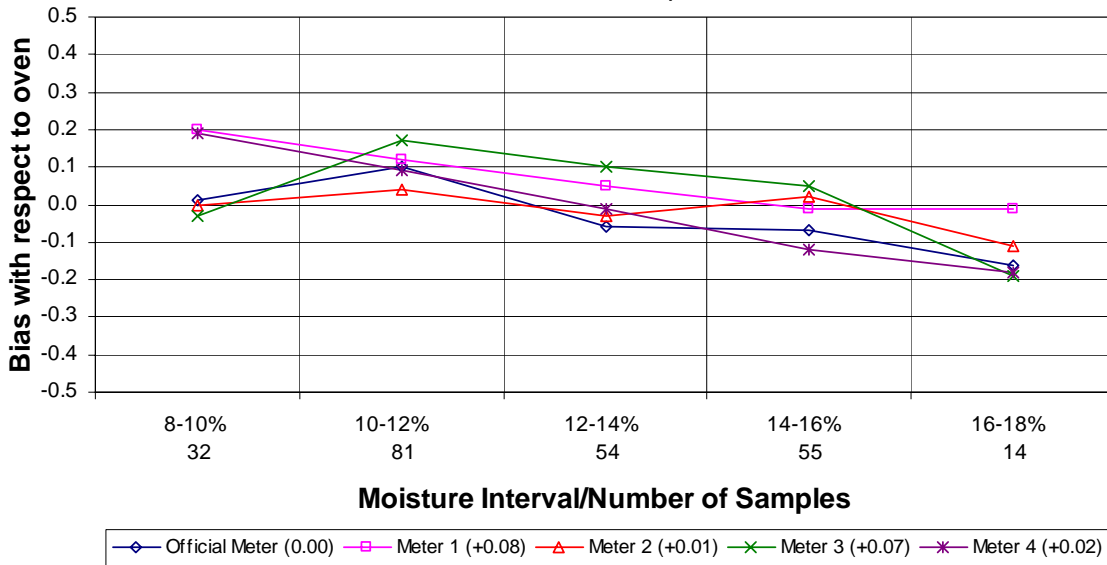


Moisture Meter Comparison - Soybeans

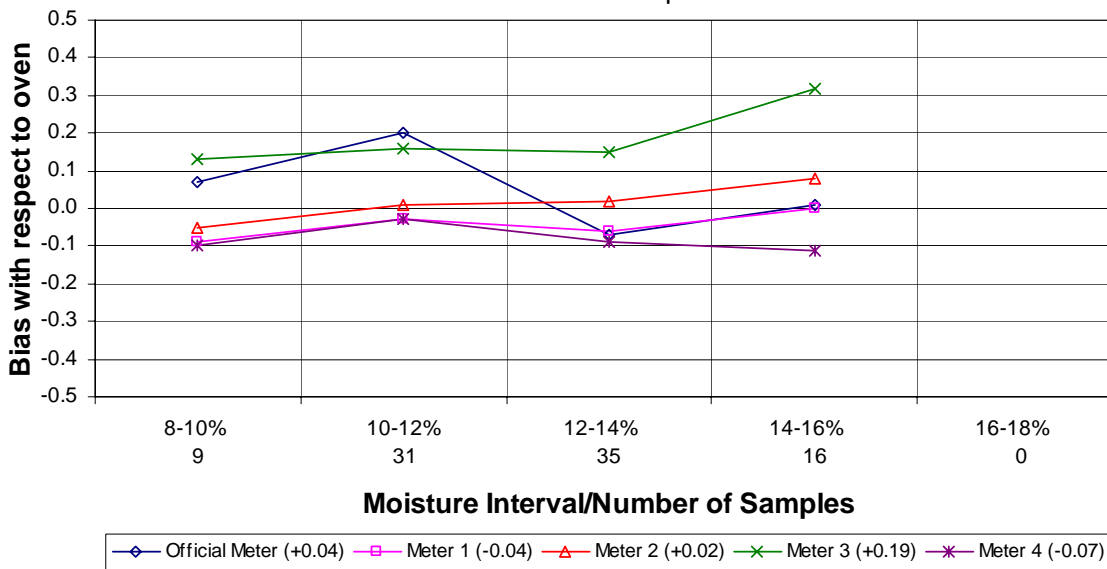
2003 - 2005 Crop Years



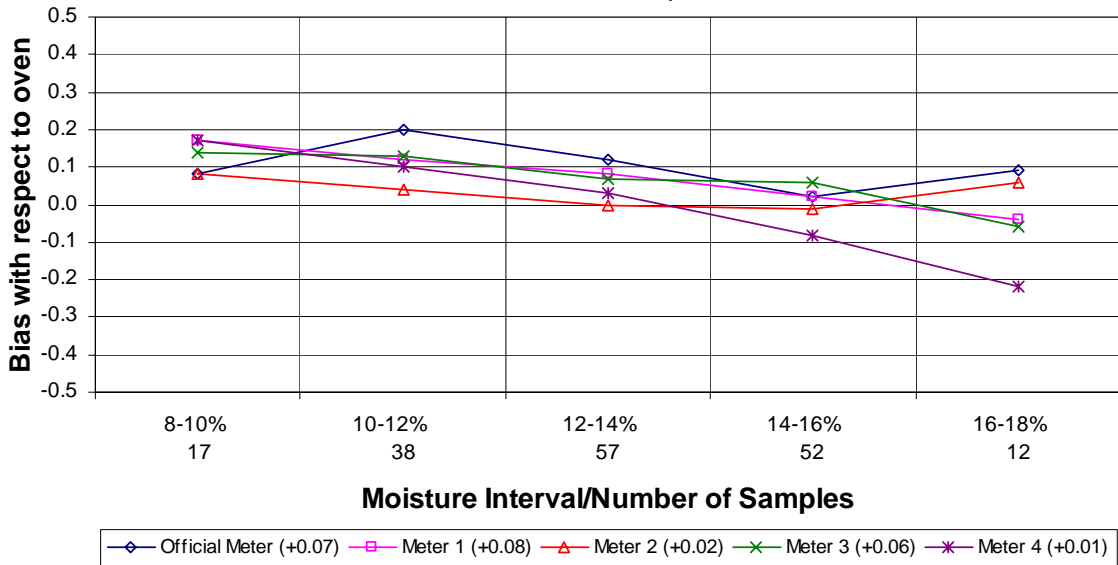
Moisture Meter Comparison - Hard Red Winter Wheat 2003 - 2005 Crop Years



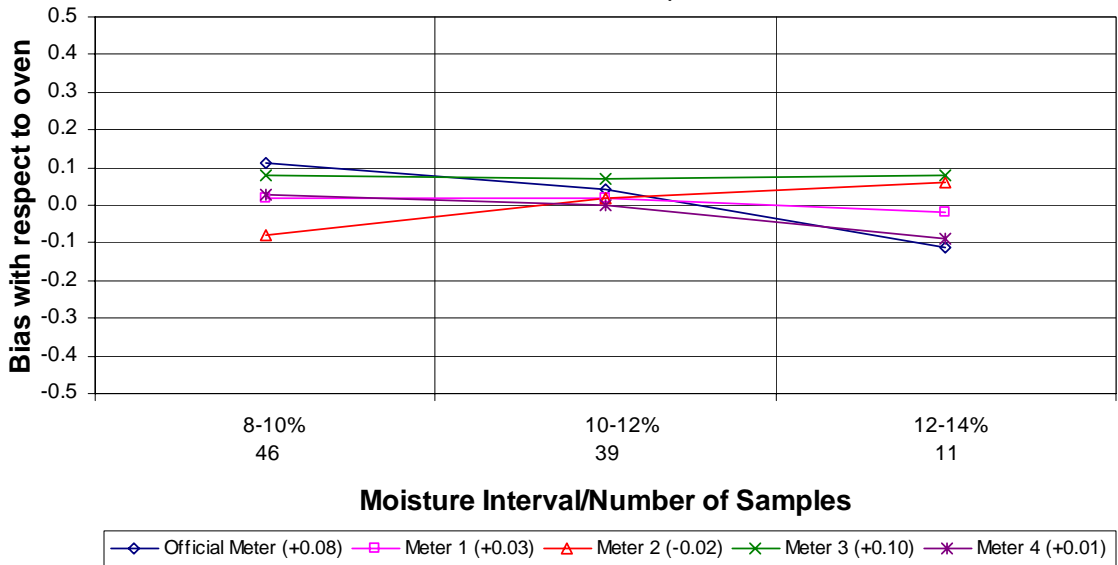
Moisture Meter Comparison - Durum Wheat 2003 - 2005 Crop Years



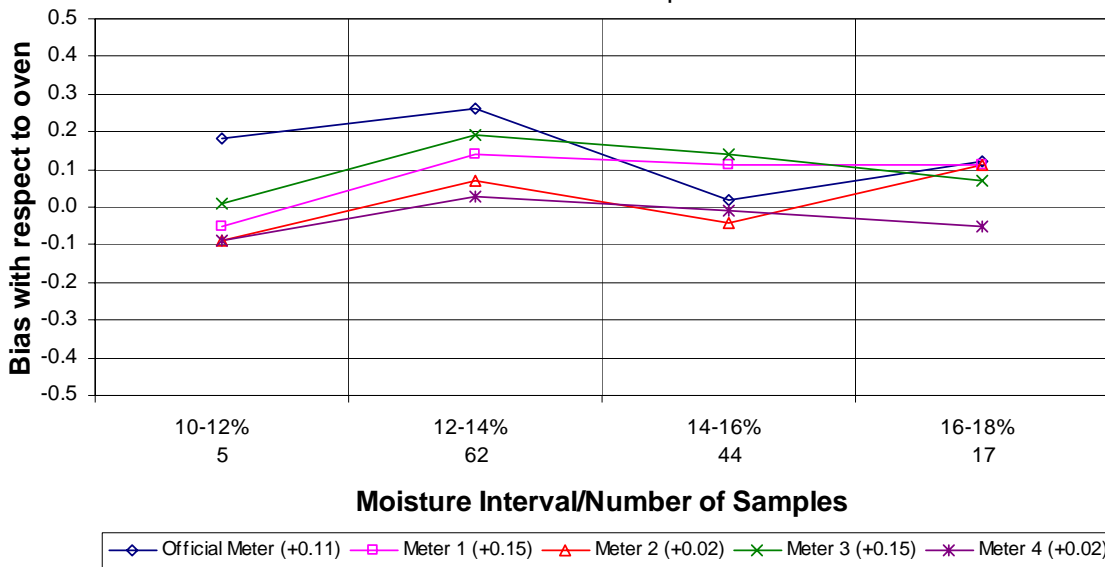
Moisture Meter Comparison - Hard Red Spring Wheat 2003 - 2005 Crop Years



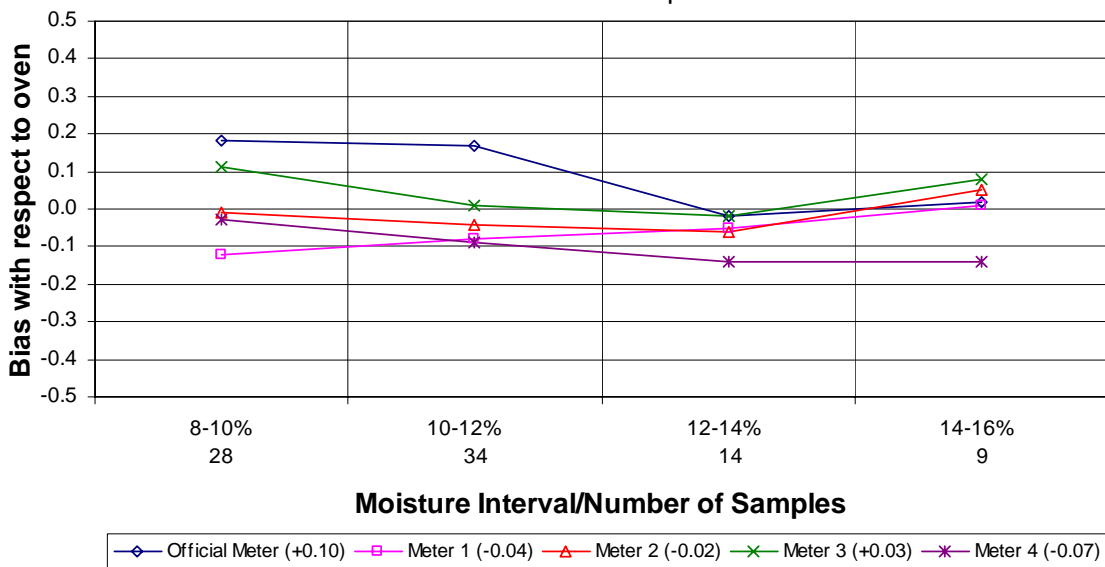
Moisture Meter Comparison - Hard White Wheat 2003 - 2005 Crop Years



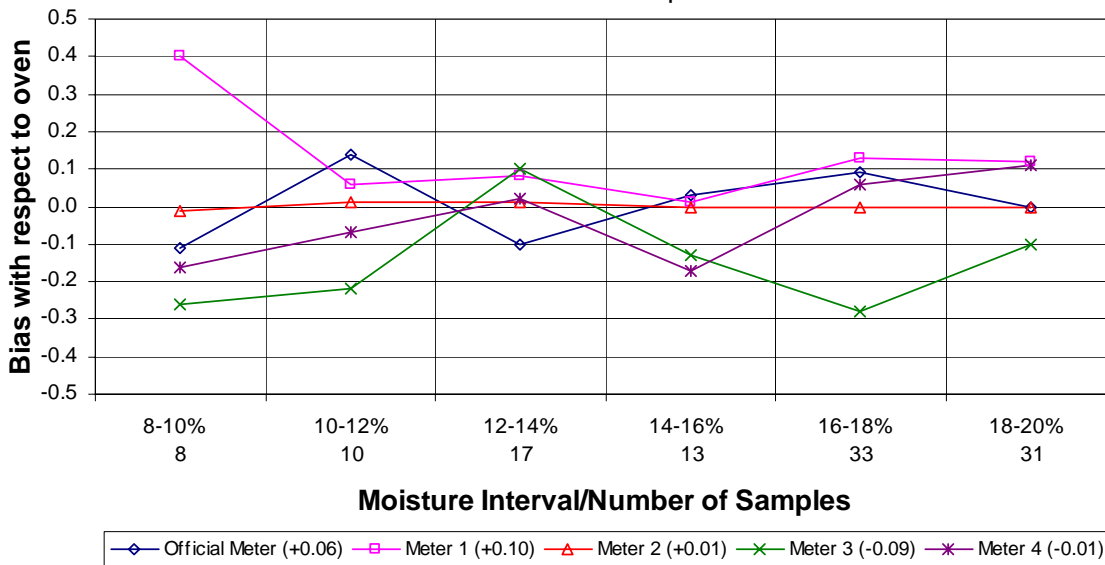
Moisture Meter Comparison - Soft Red Winter Wheat 2003 - 2005 Crop Years



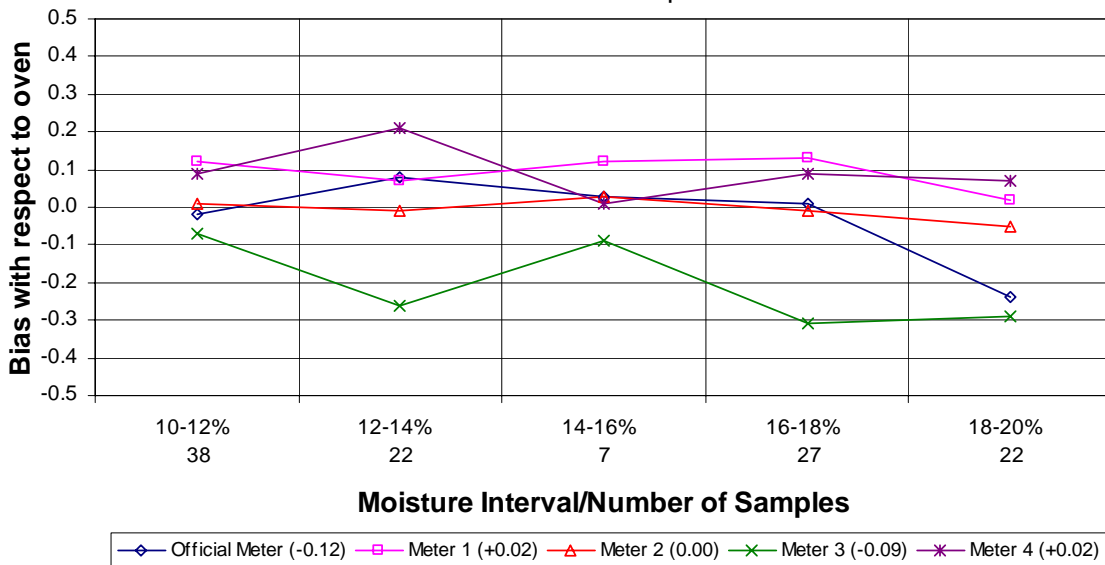
Moisture Meter Comparison - Soft White Wheat 2003 - 2005 Crop Years



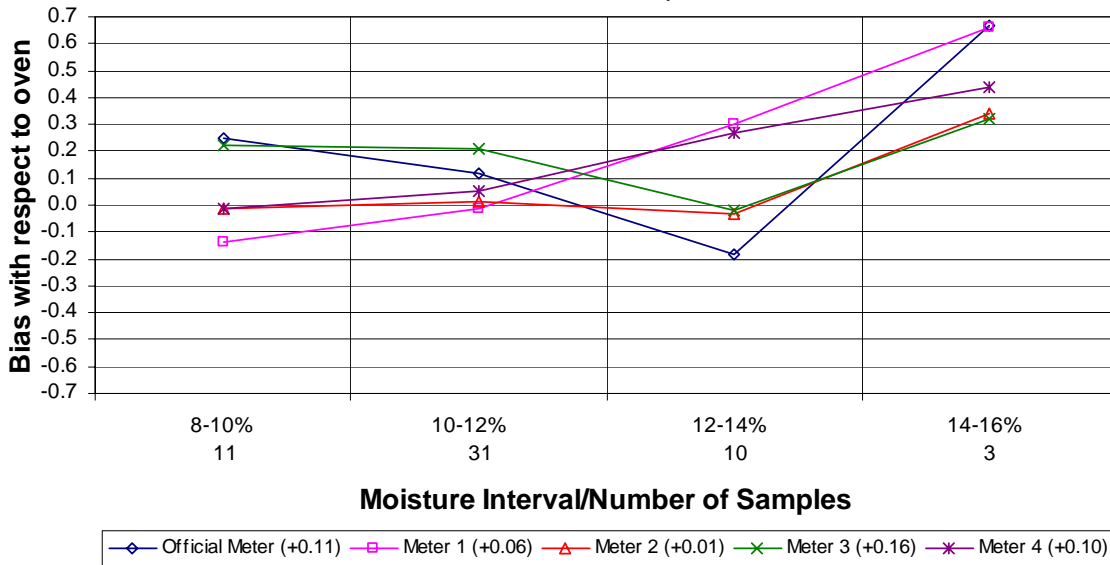
Moisture Meter Comparison - Long Grain Rough Rice 2003 - 2005 Crop Years



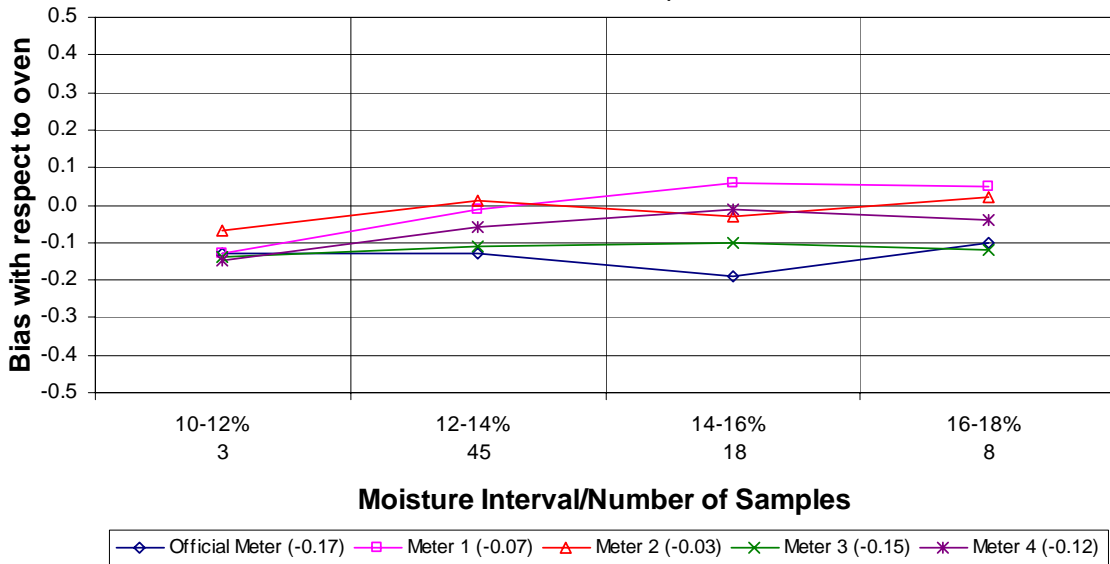
Moisture Meter Comparison - Medium Grain Rough Rice 2003 - 2005 Crop Years



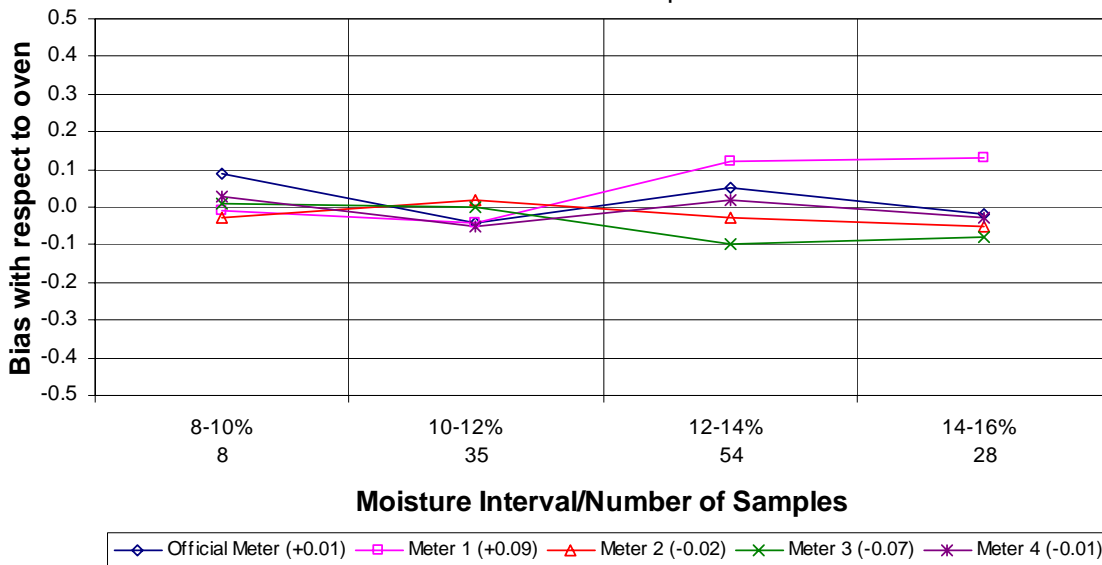
Moisture Meter Comparison - Oats 2003 - 2005 Crop Years



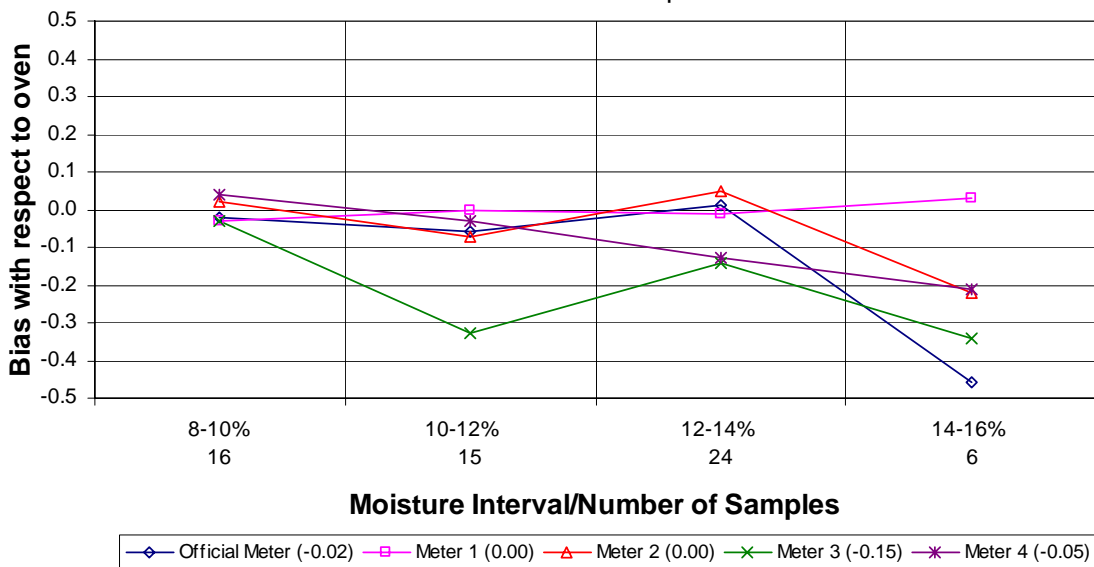
Moisture Meter Comparison - Grain Sorghum 2003 - 2005 Crop Years



Moisture Meter Comparison - Six-Row Barley 2003 - 2005 Crop Years



Moisture Meter Comparison - Two-Row Barley 2003 - 2005 Crop Years



Moisture Meter Comparison - Sunflower Seed 2003 - 2005 Crop Years

