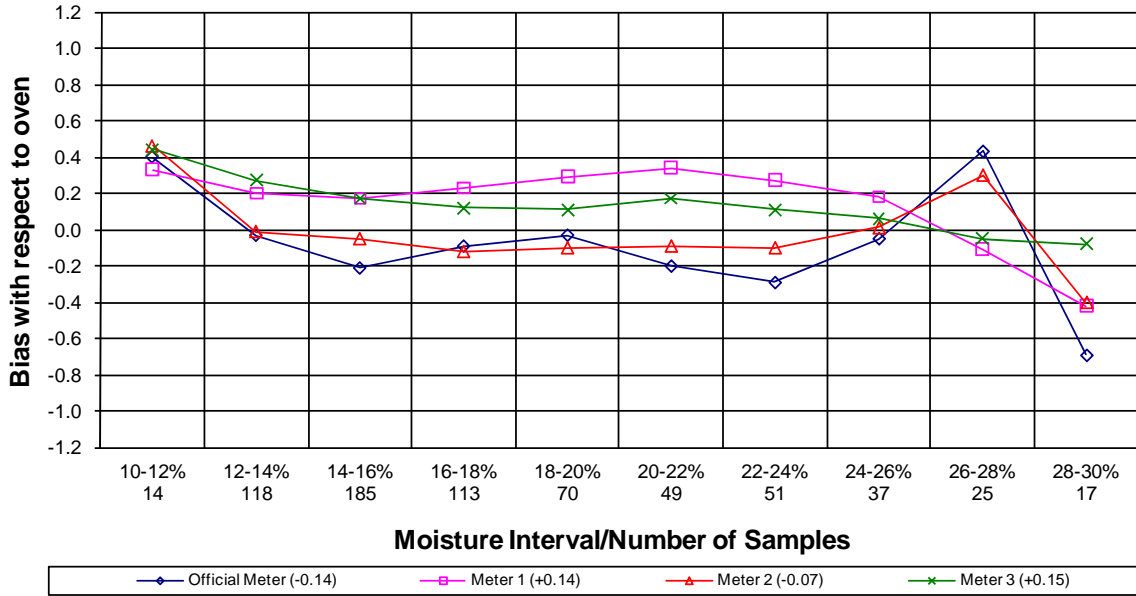
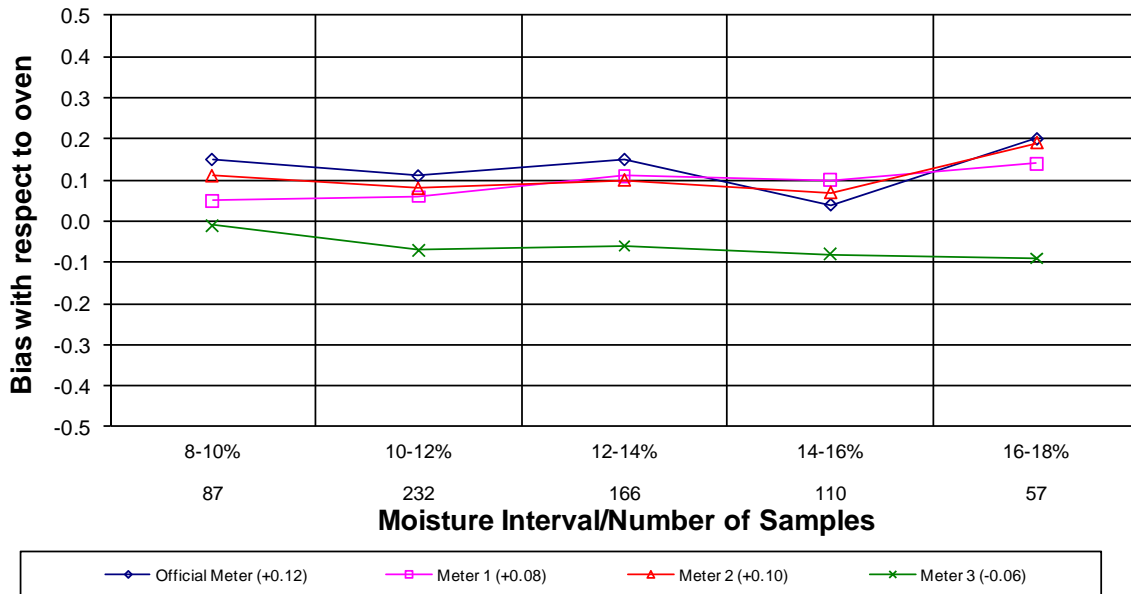


2006 – 2008 GMM Phase II Comparisons: August 2009

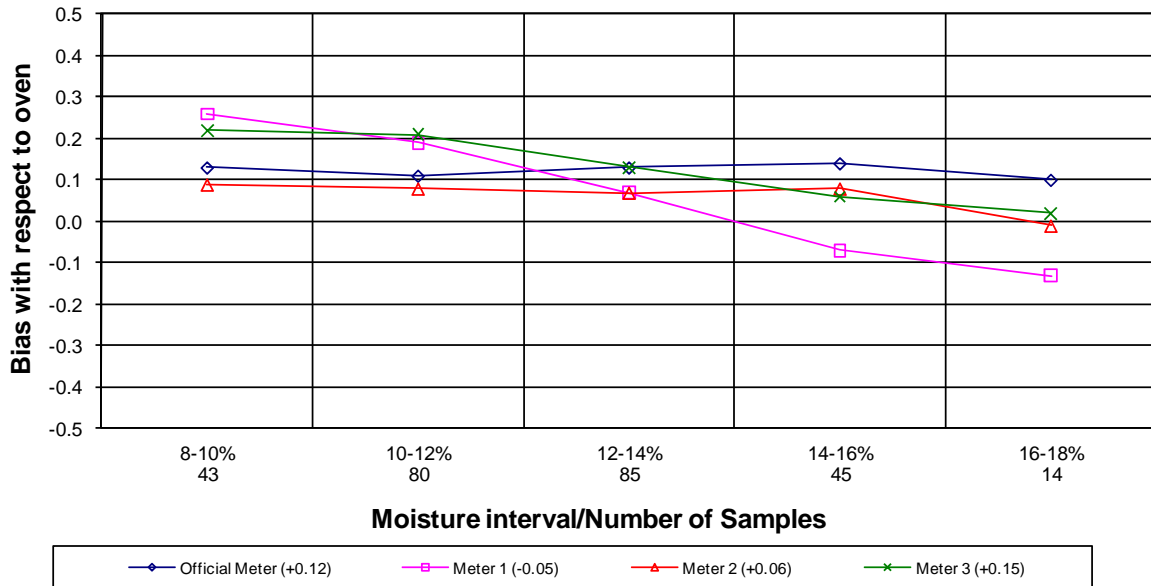
### Moisture Meter Comparison - Corn 2006 - 2008 Crop Years



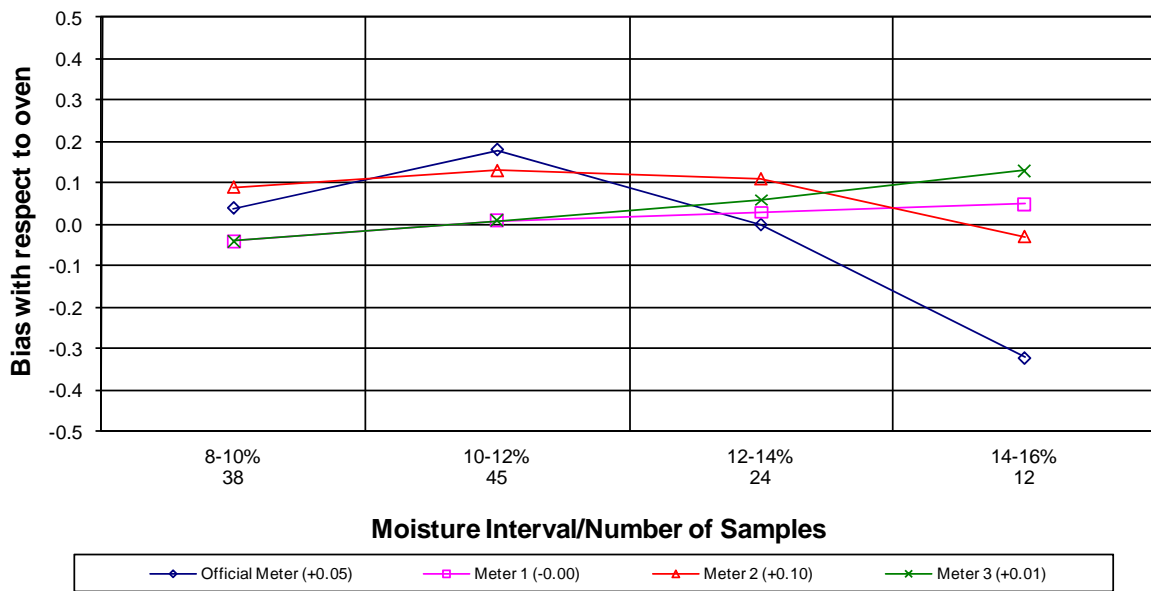
### Moisture Meter Comparison - Soybeans 2006 - 2008 Crop Years



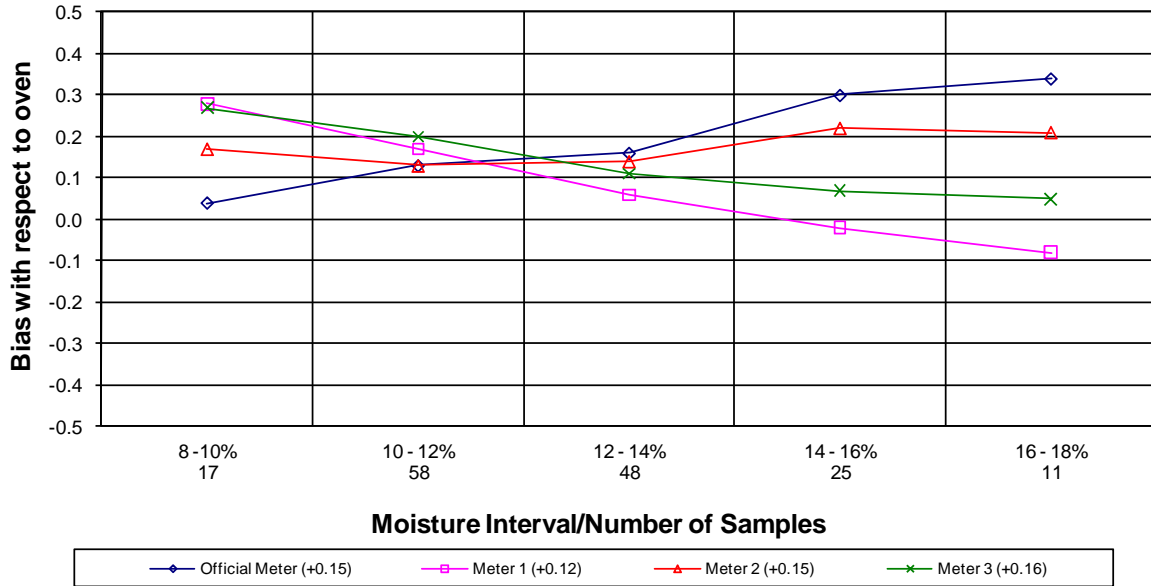
## Moisture Meter Comparison - Hard Red Winter Wheat 2006 - 2008 Crop Years



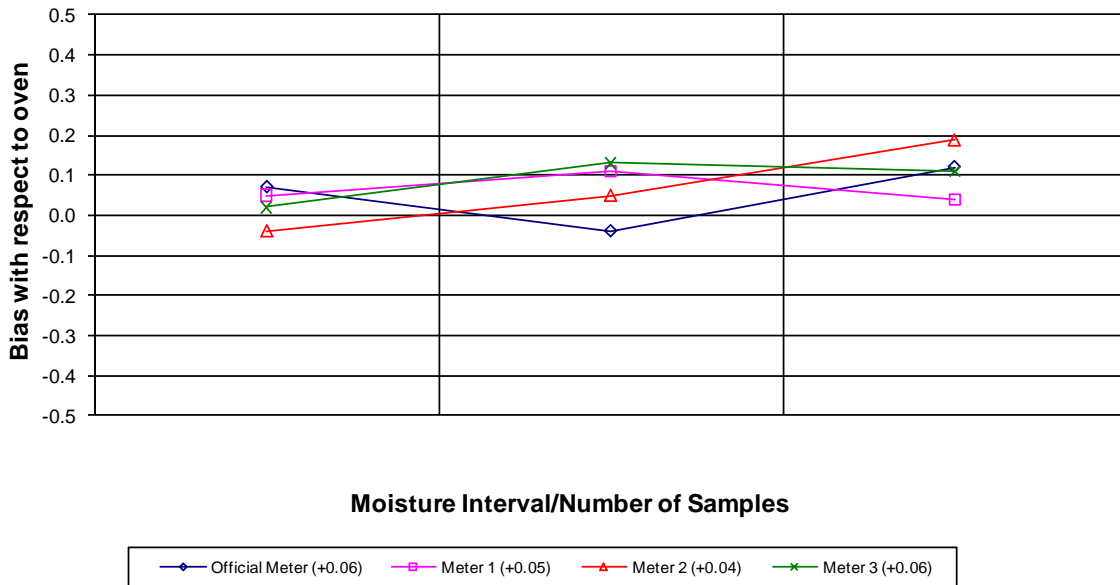
## Moisture Meter Comparison - Durum 2006 - 2008 Crop Years



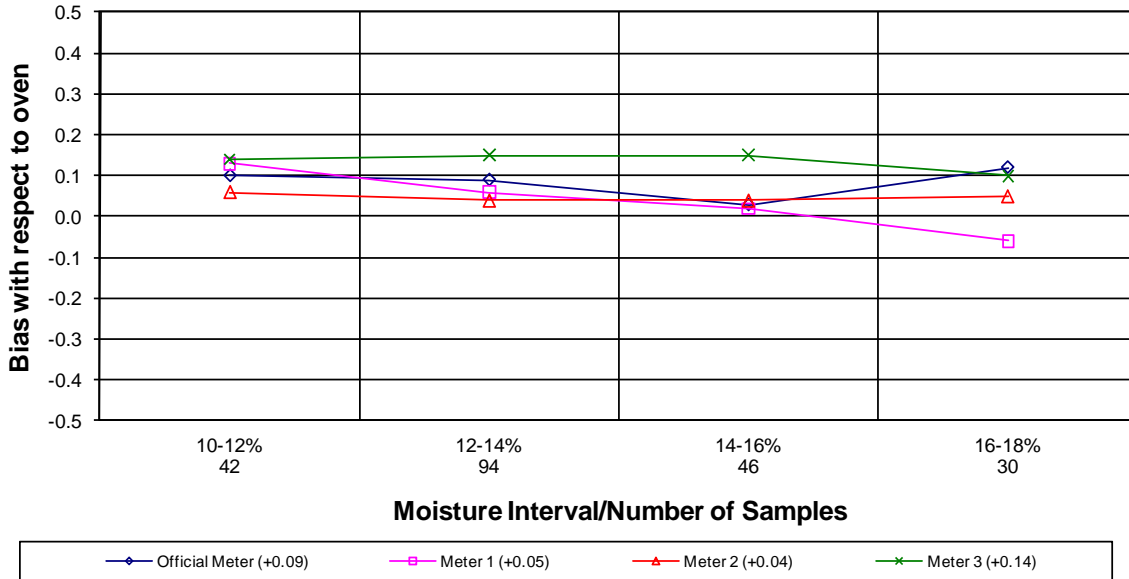
## Moisture Meter Comparison - Hard Red Spring Wheat 2006 - 2008 Crop Years



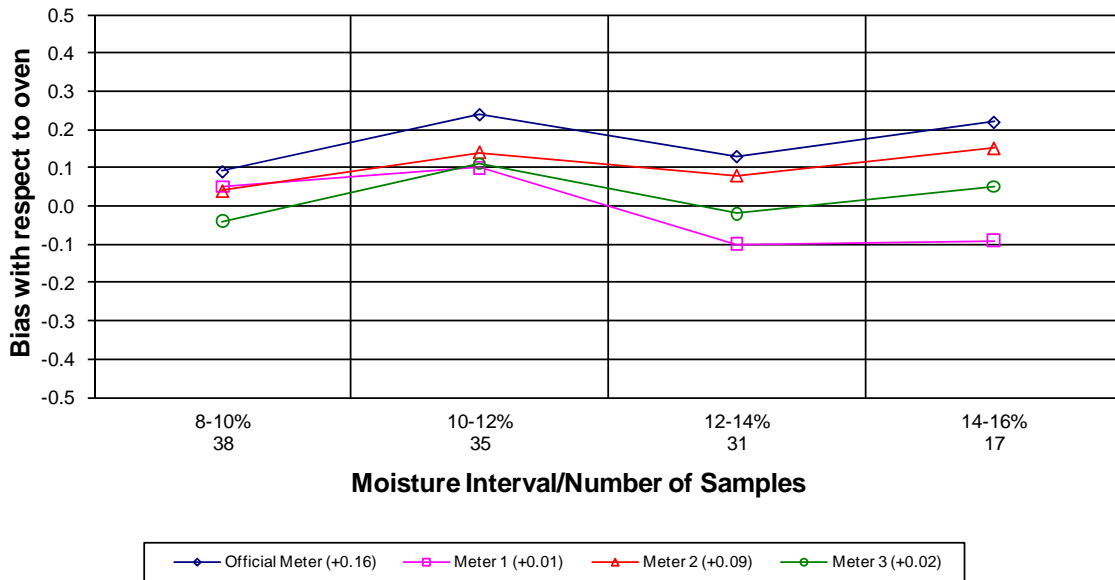
## Moisture Meter Comparison - Hard White Wheat 2006 - 2008 Crop Years



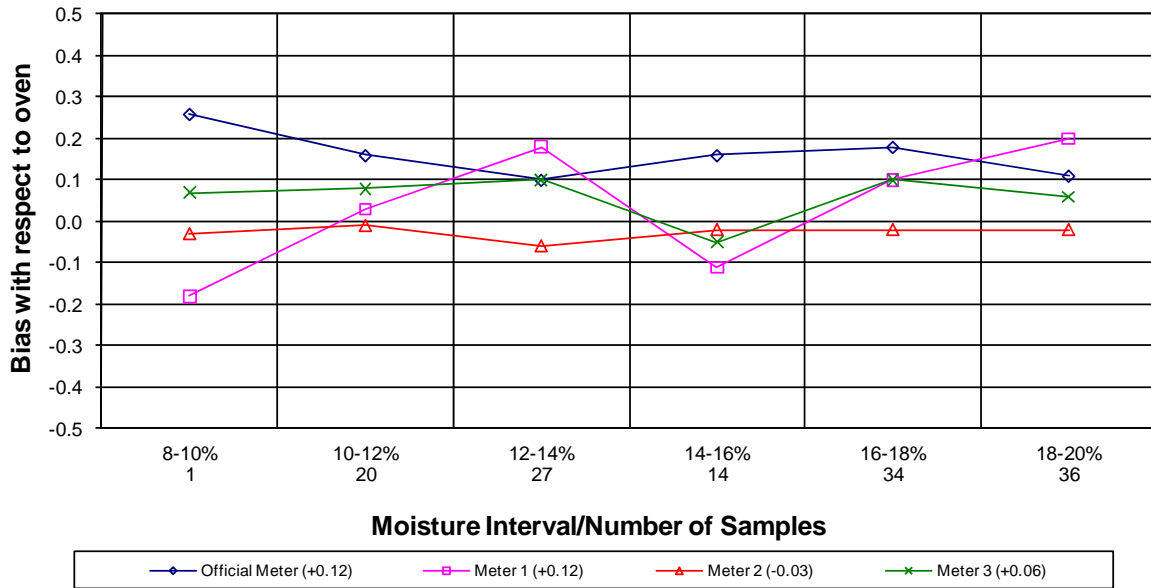
## Moisture Meter Comparison - Soft Red Winter Wheat 2006 - 2008 Crop Years



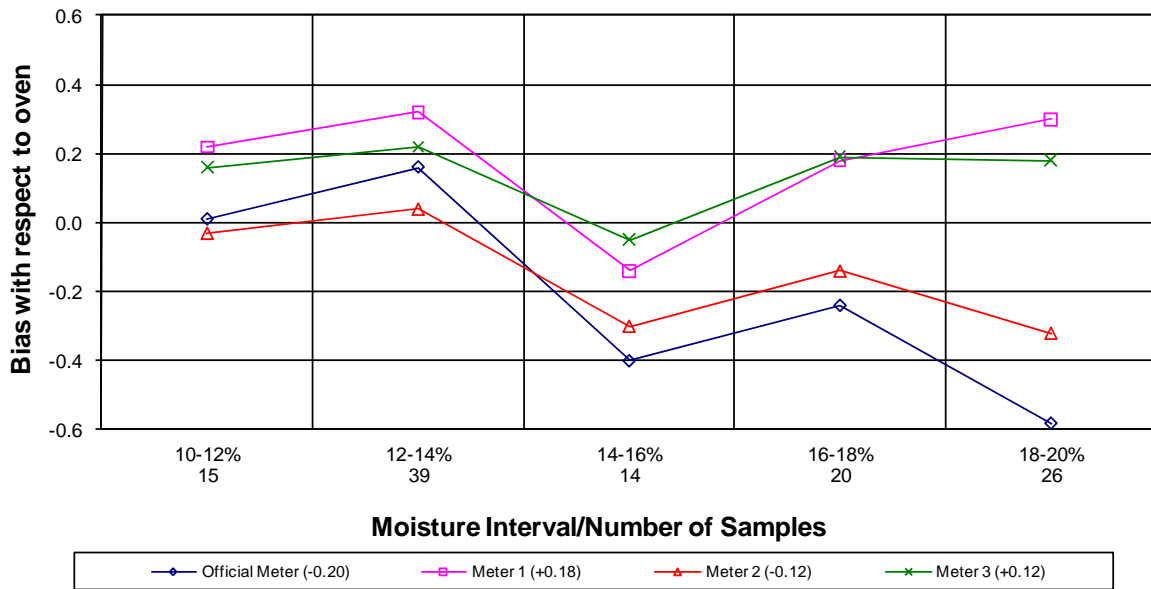
## Moisture Meter Comparison - Soft White Wheat 2006 - 2008 Crop Years



## Moisture Meter Comparison - Long Grain Rough Rice 2006 - 2008 Crop Years

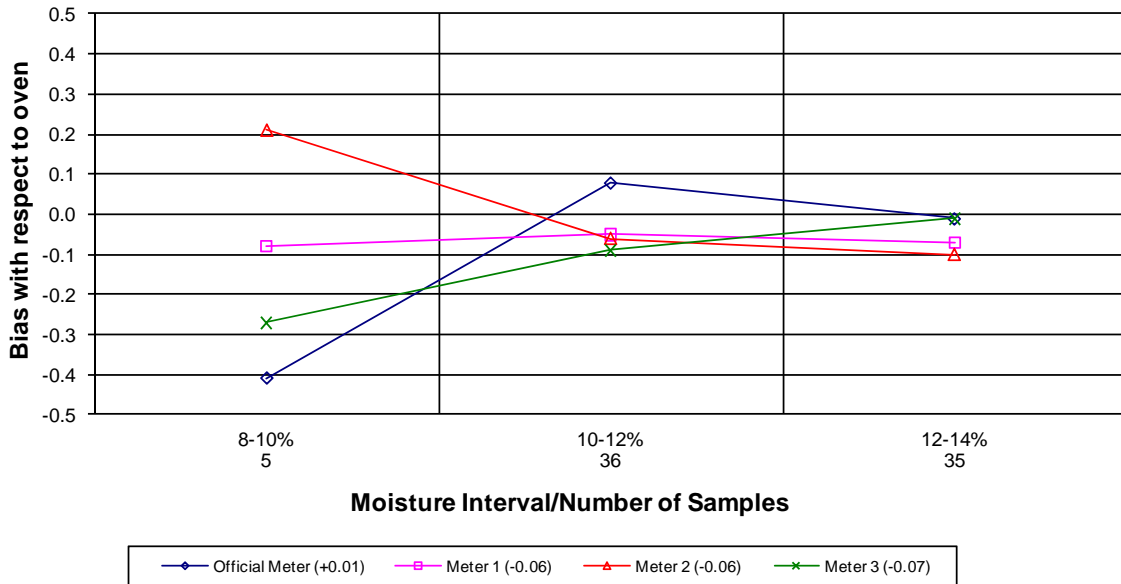


## Moisture Meter Comparison - Medium Grain Rough Rice 2006 - 2008 Crop Years



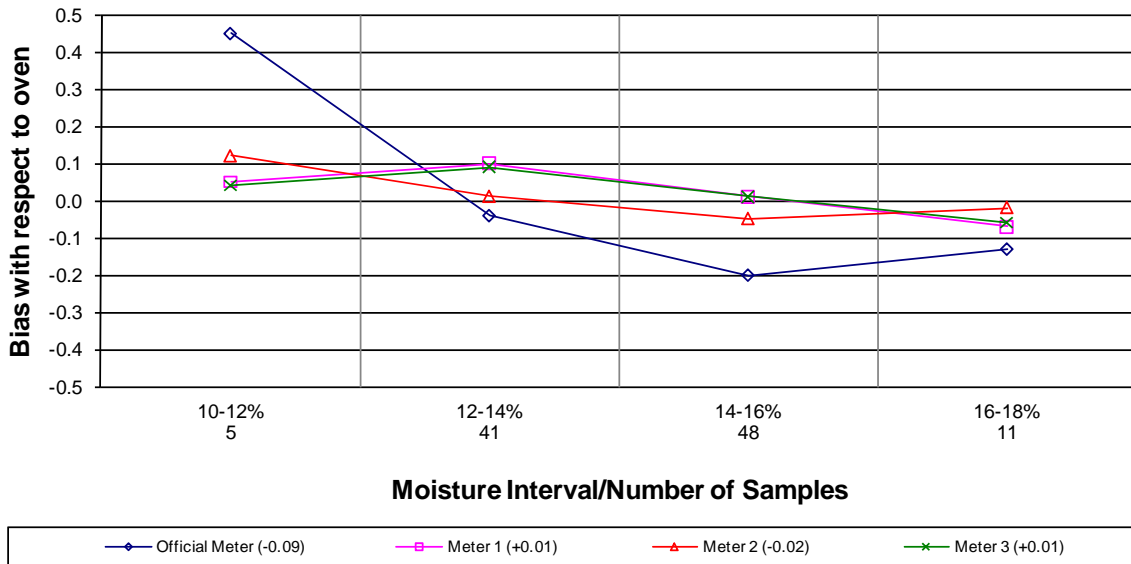
## Moisture Meter Comparison - Oats

2006 - 2008 Crop Years



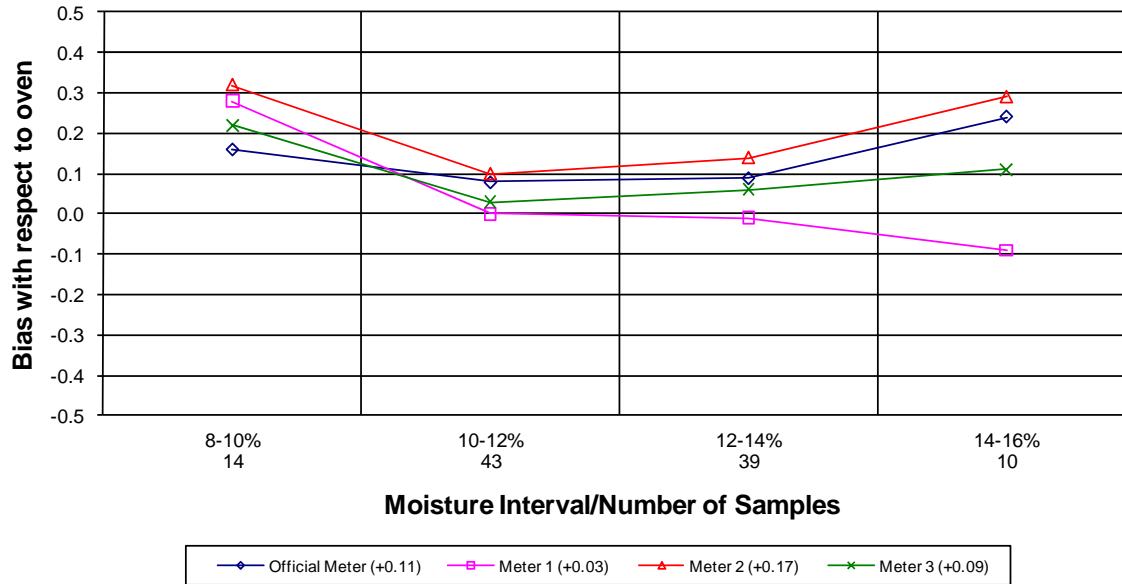
## Moisture Meter Comparison - Grain Sorghum

2006 - 2008 Crop Years



## Moisture Meter Comparison - Six Row Barley

2006 - 2008 Crop Years



## Moisture Meter Comparison - Two Row Barley

2006 - 2008 Crop Years

