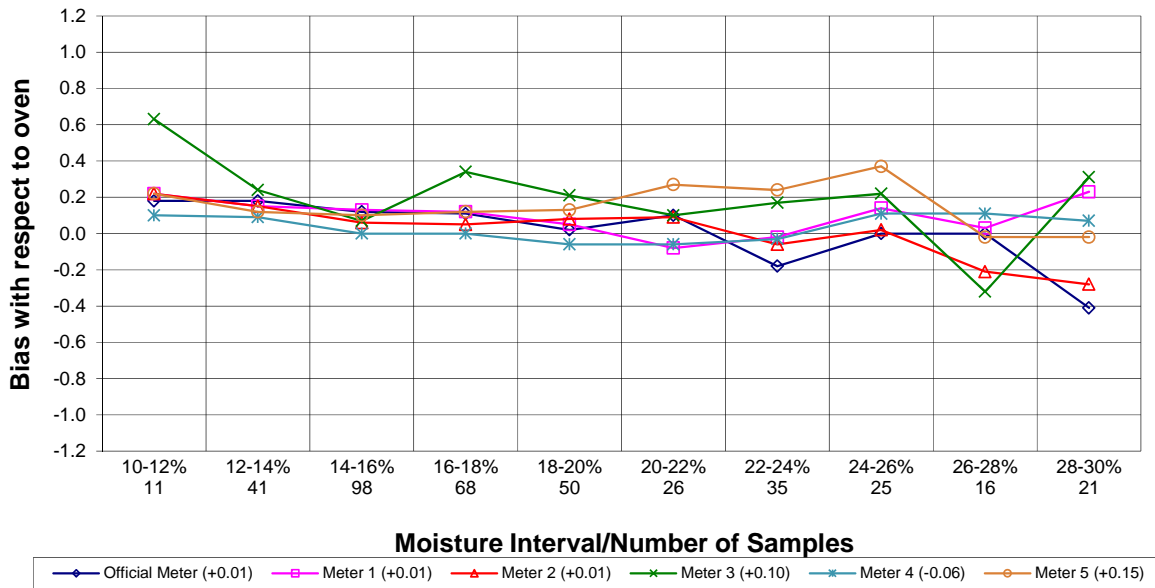


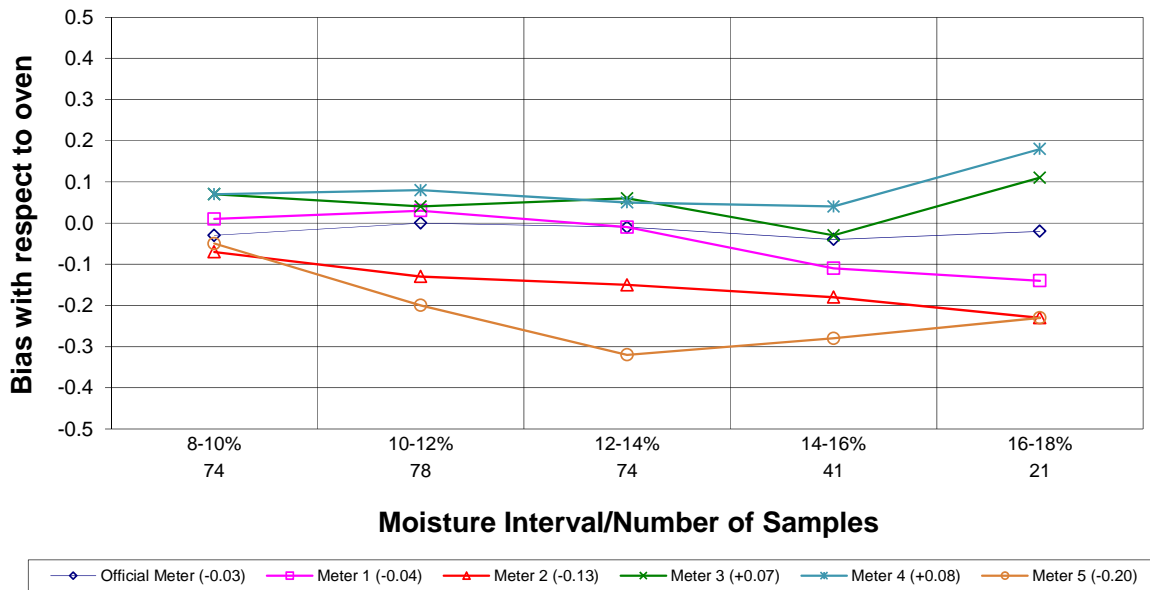
Moisture Meter Comparison - Corn

2011 - 2013 Crop Years

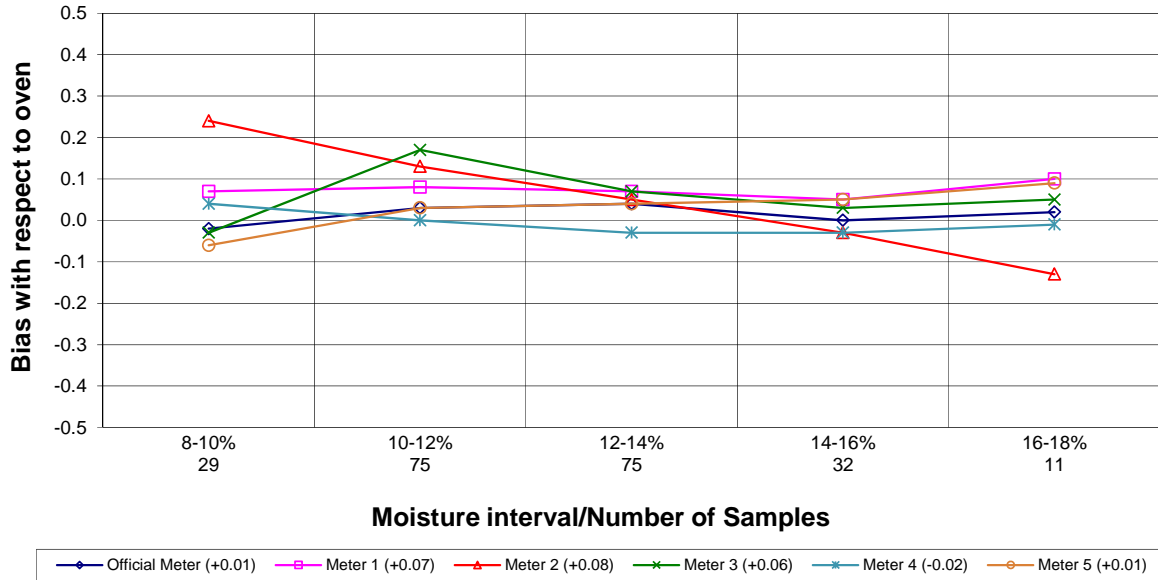


Moisture Meter Comparison - Soybeans

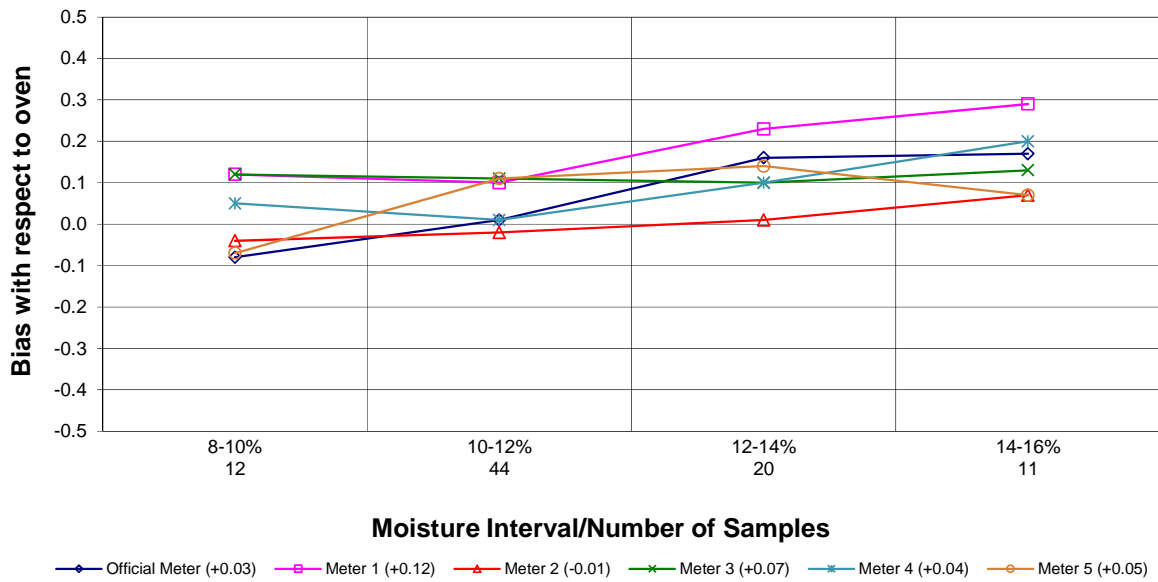
2011 - 2013 Crop Years



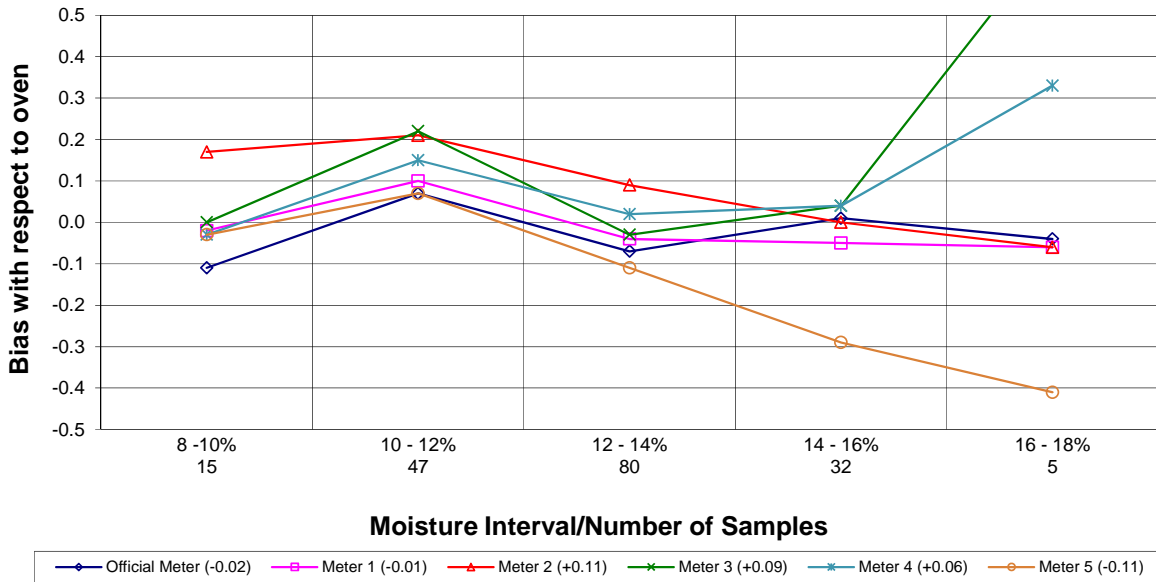
Moisture Meter Comparison - Hard Red Winter Wheat 2011 - 2013 Crop Years



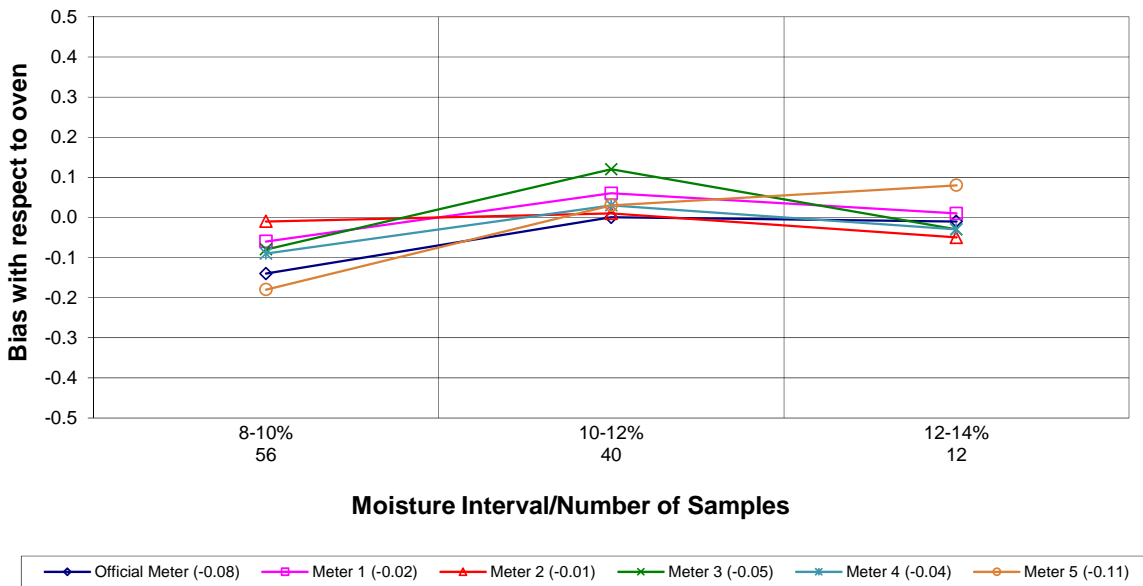
Moisture Meter Comparison - Durum 2011 - 2013 Crop Years



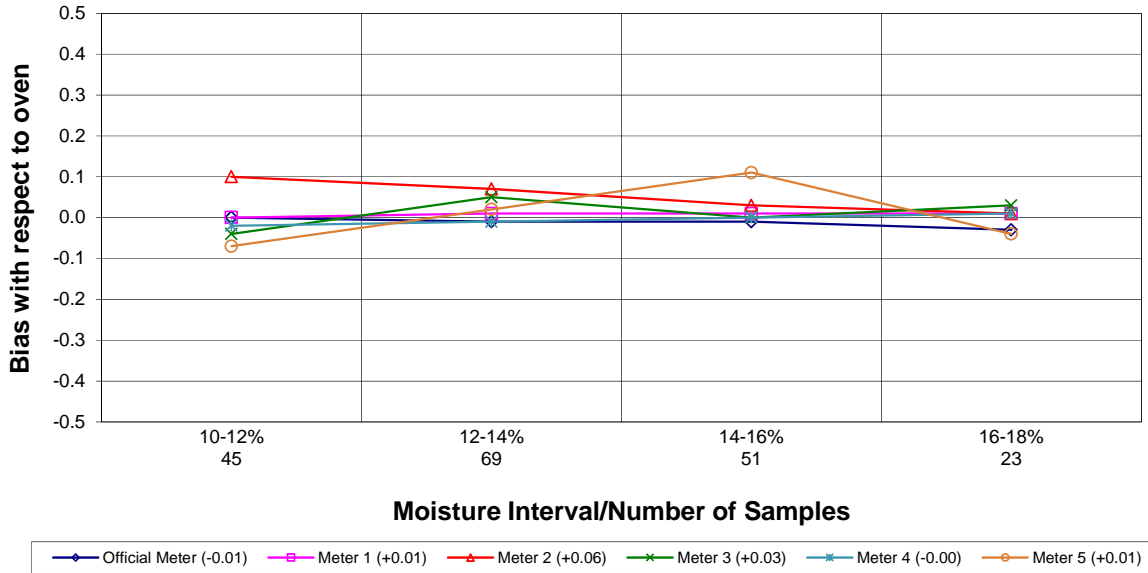
Moisture Meter Comparison - Hard Red Spring Wheat 2011 - 2013 Crop Years



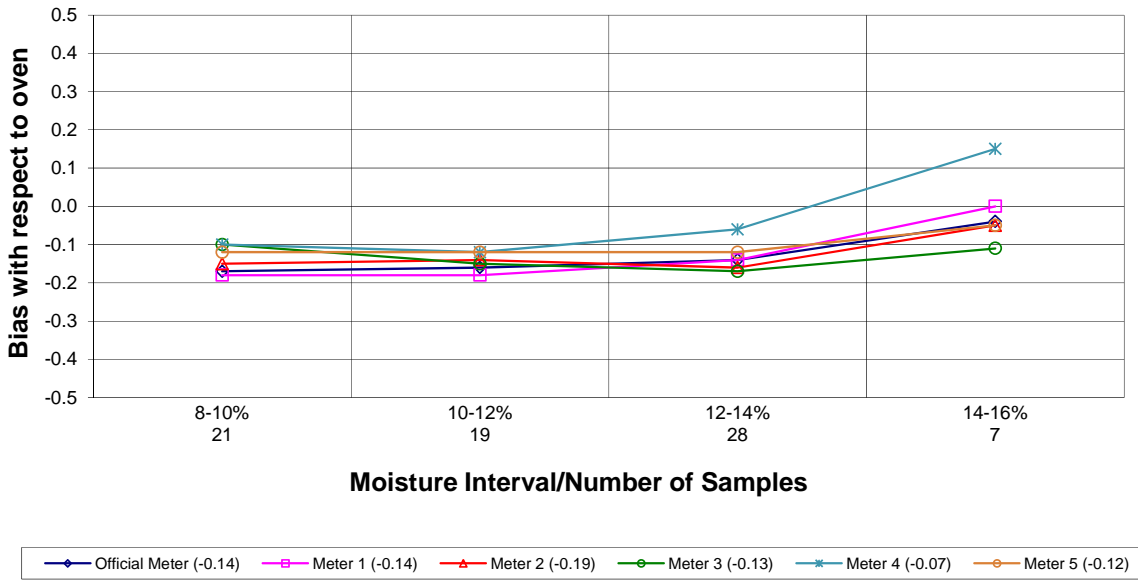
Moisture Meter Comparison - Hard White Wheat 2011 - 2013 Crop Years



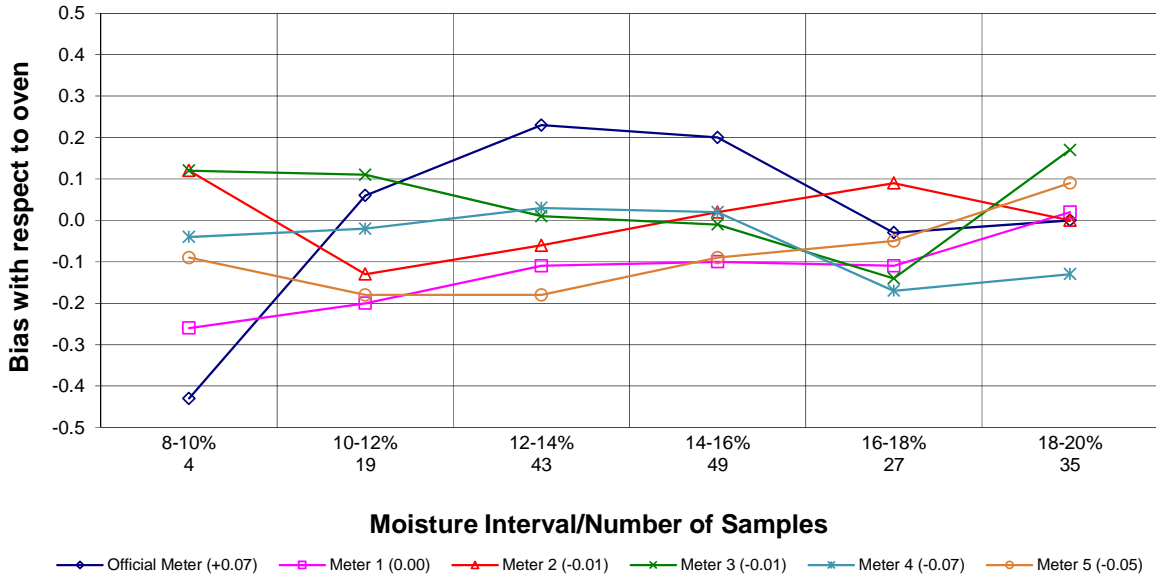
Moisture Meter Comparison - Soft Red Winter Wheat 2011 - 2013 Crop Years



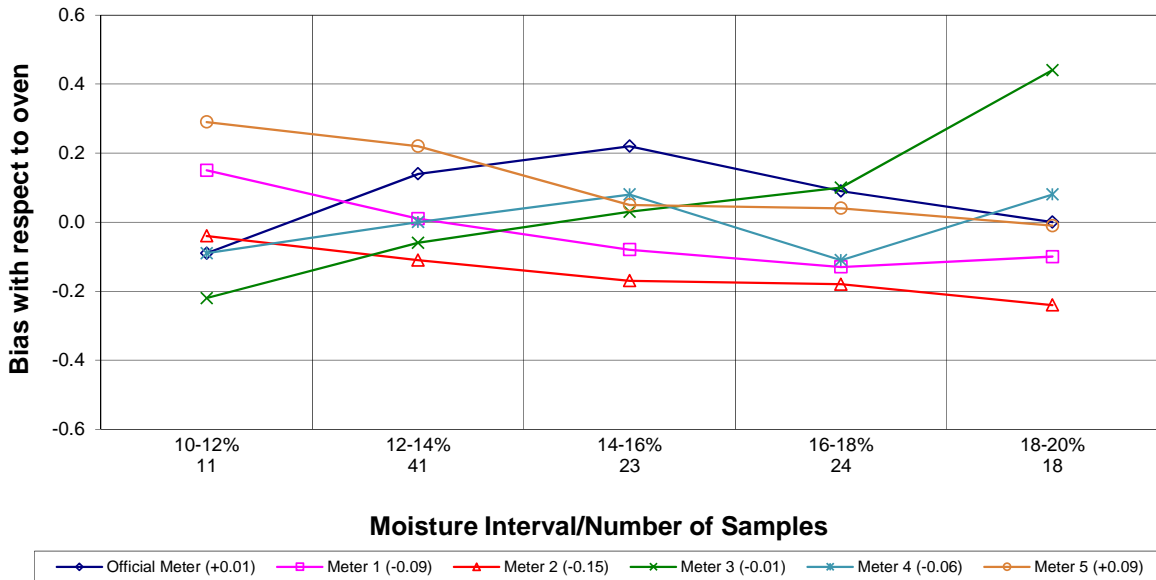
Moisture Meter Comparison - Soft White Wheat 2011 - 2013 Crop Years



Moisture Meter Comparison - Long Grain Rough Rice 2011 - 2013 Crop Years

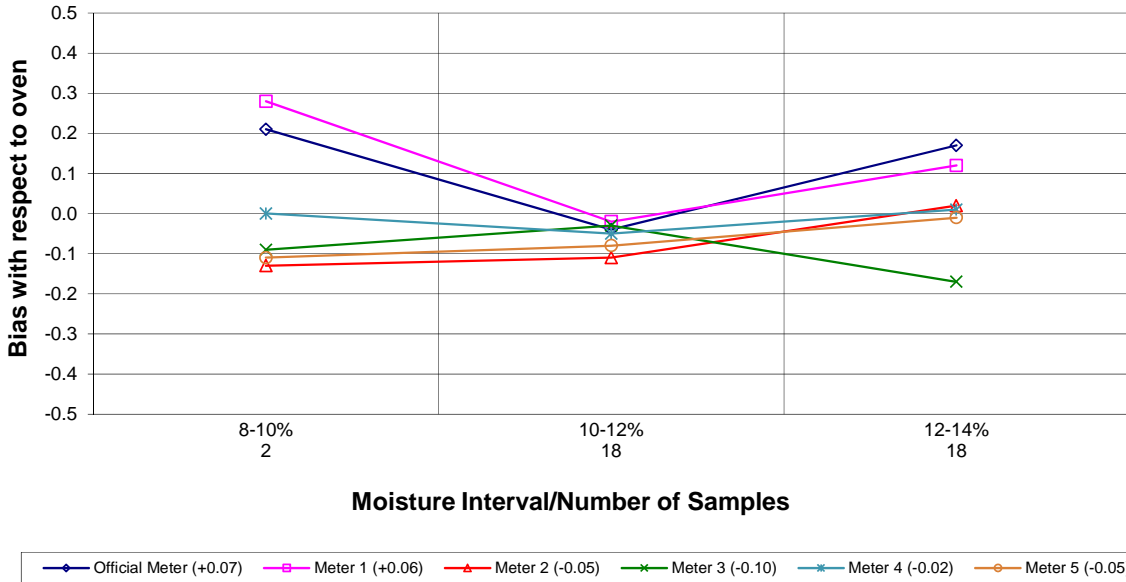


Moisture Meter Comparison - Medium Grain Rough Rice 2010 - 2013 Crop Years



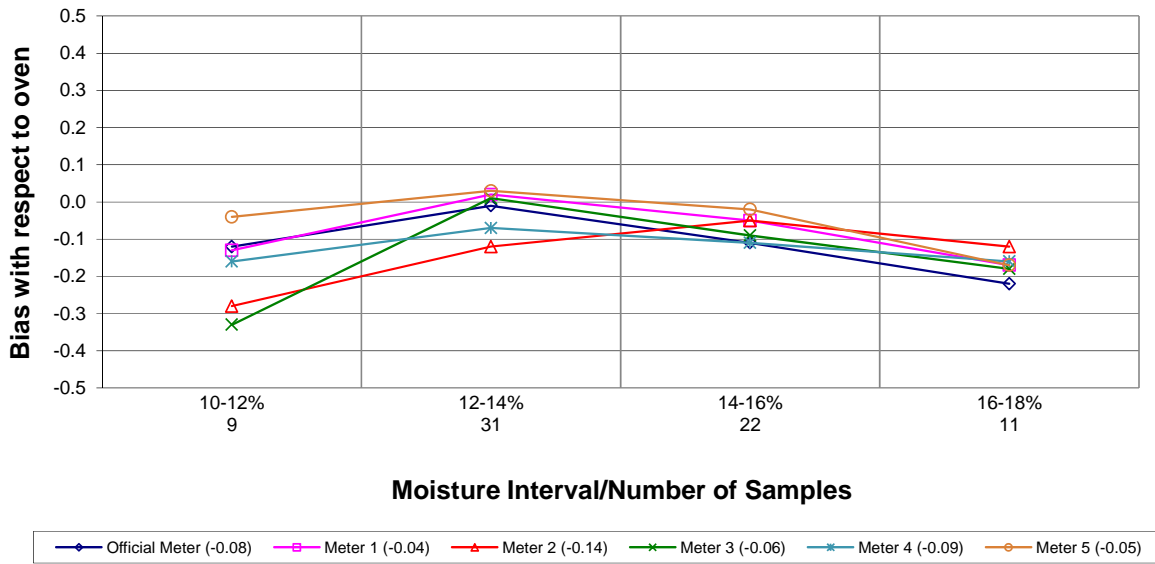
Moisture Meter Comparison - Oats

2011 - 2013 Crop Years

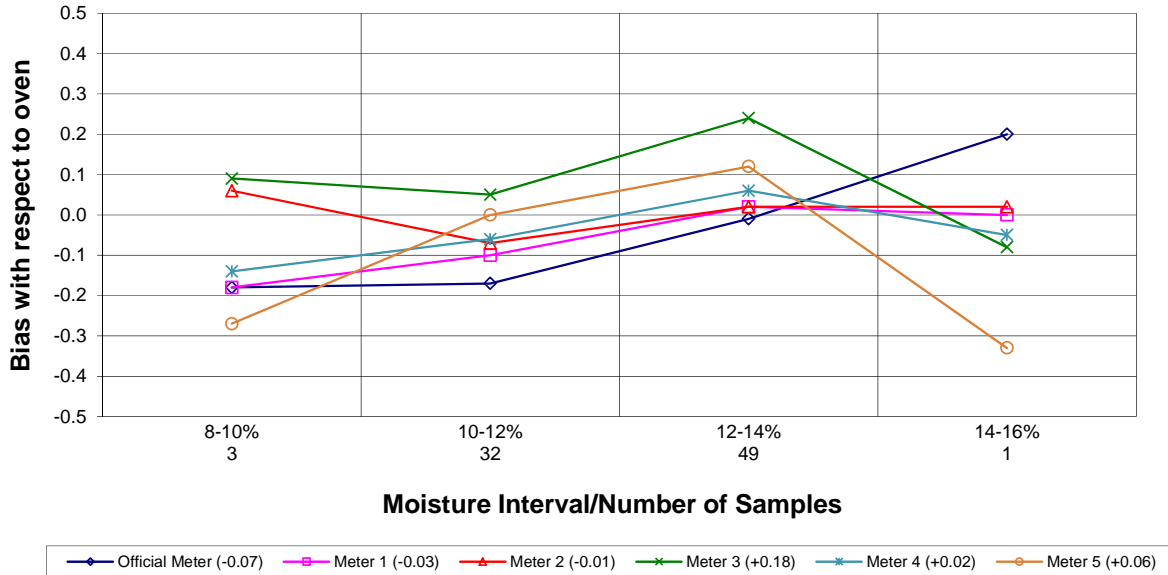


Moisture Meter Comparison - Grain Sorghum

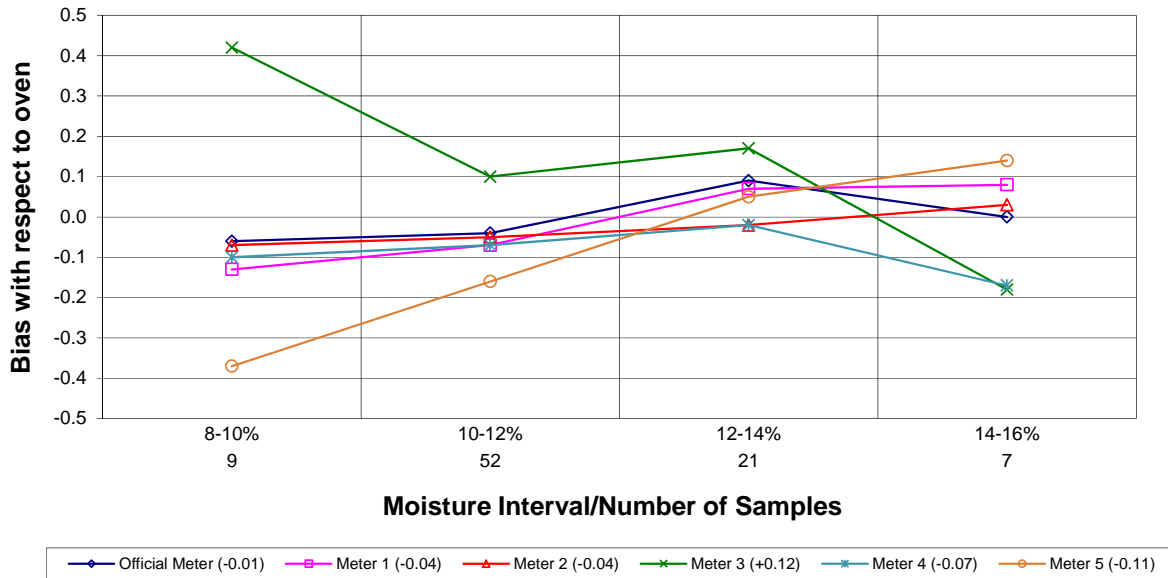
2011 - 2013 Crop Years



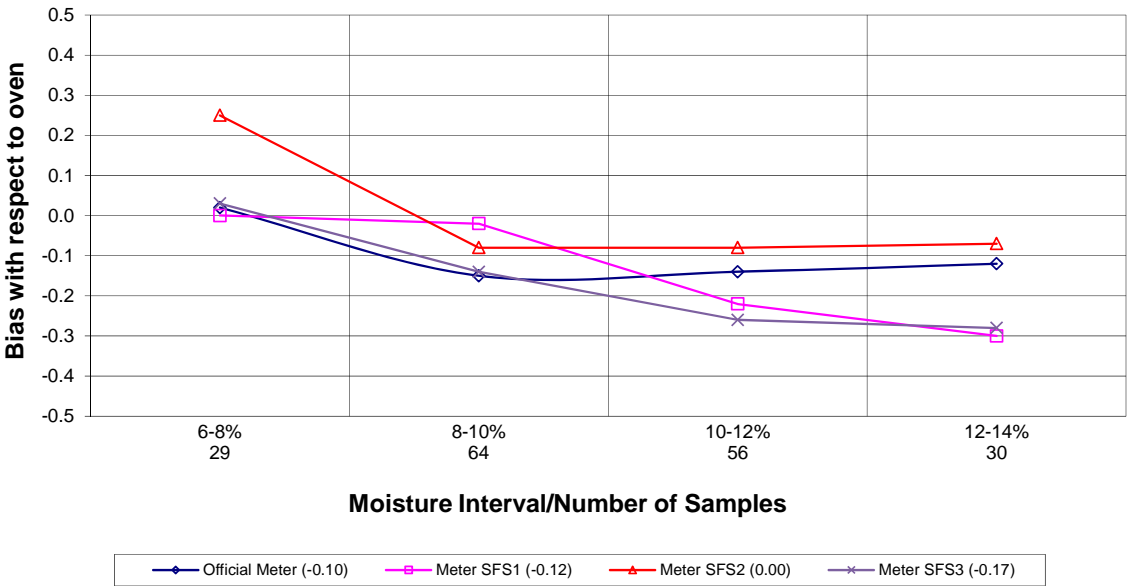
Moisture Meter Comparison - Six Row Barley 2011 - 2013 Crop Years



Moisture Meter Comparison -Two Row Barley 2011 - 2013 Crop Years



Moisture Meter Comparison - Sunflower Seed 2011 - 2013 Crop Years



On May 1, 2013, the USDA GIPSA official moisture meter for all fifteen NTEP grains switched to the Unified Grain Moisture Algorithm (UGMA) technology. The Official Meter designation in the above comparison charts is for the UGMA master system.