



OrgPublisher Web Administration Guide for Windows Server 2012

Table of Contents

Introduction	3
Role Requirements for Installation.....	3
Installing IIS7 on Server 2012	4
About IIS7	4
Installing IIS7.....	4
Configuring Groups.....	7
Creating a Group on the Domain Controller	7
Creating a Group on the Web Server	7
Installing OrgPublisher Web Administration	8
Setting NTFS Permissions for opweb.....	11
Set NTFS Permissions for SourceCharts.....	12
Set NTFS Permissions for ArchivedCharts	12
Set NTFS Permissions for SearchDictionary.....	12
Set NTFS Permissions for PublishedCharts	13
Web Administration NTFS Rights Graphic	14
Configuring Internet Information Services (IIS7).....	15
Create the OrgPublisher Application Pool	15
Setting Up ISAPI Extensions in IIS	17
Setting Up Handler Mappings in IIS	18
Setting Up IIS Authentication	19
Setting the MIME Type.....	22
Setting Up DCOM Permissions.....	24
Testing OrgPublisher Web Administration	28
Prerequisites for Testing Web Administration	28
Testing Web Administration	28
Prerequisites for testing Web Administration Publishing to EChart Rich Client.....	29
Test Publishing an EChart Rich Client Chart	29
Web Administration Next Steps.....	35
Troubleshooting Tips	36

Introduction

The purpose of this document is to provide the information needed to successfully install OrgPublisher Web Administration on a Windows 2012 Server.

Role Requirements for Installation

- You must have a valid license key to activate the current version of OrgPublisher.
- If upgrading from a previous version of OrgPublisher, review the OrgPublisher Upgrade Considerations Guide found in the Customer Care Center.
- Confirm the server meets all Web Administration Server requirements noted in the System Requirements section of the web site.
- Verify the type of server where OrgPublisher Web Administration will be installed. This installation guide should only be used for installations of OrgPublisher Web Administration on Windows Server 2012.
 - To confirm the server type, open the **Control Panel** and then **System**. Verify that Windows Server 2012 appears in the **Windows edition** section.
- Complete the setup of the Global Group (**OPWeb_GG**) described in Configuring Groups.
- The administrator on the server must request that the administrator on the Domain Controller create the Global group (**OPWeb_GG** group).

Installing IIS7 on Server 2012

About IIS7

- Installing IIS on your Windows server is a prerequisite for installing OrgPublisher.
- When using the Add Roles and Features Wizard to install IIS, you get the default installation, which has a minimum set of role services.
- Additional IIS role services are required for the OrgPublisher Web Administration installation (described in Step 6 below).

Installing IIS7

1. Access the **Server Manager**.
2. Select **Manage** in the menu bar.

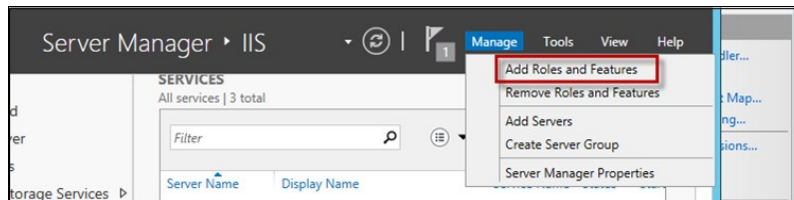


Figure 1.

3. Click **Add Roles and Features**. The Add Roles and Features Wizard opens.
4. Select **Before You Begin** and verify that:
 - The administrator account has a strong password
 - The network settings, such as IP addresses, are configured
 - The latest security updates from Windows Update are installedClick Next.
5. In the left pane, select **Server Roles**, and expand **Web Server(IIS)**.
6. Expand Web Server and Common HTTP Features.

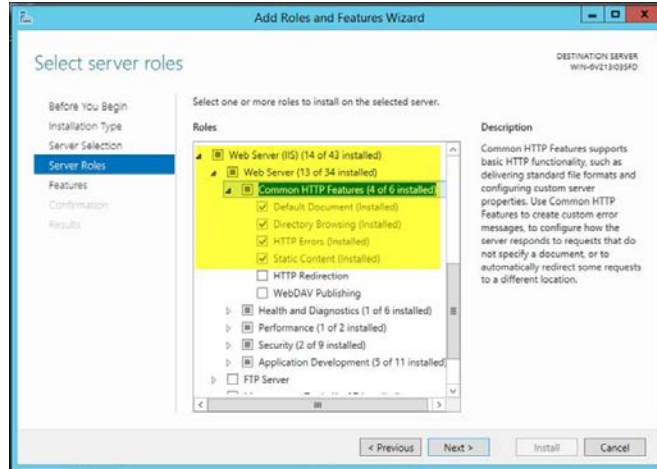


Figure 2.

7. Verify that **Default Document**, **Directory Browsing**, **HTTP Errors**, and **Static Content** are all installed.
8. Expand **Health and Diagnostics** and verify that **HTTP Logging** is installed.

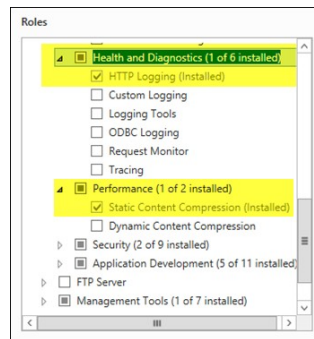


Figure 3.

9. Expand **Performance** and verify that **Static Content Compression** is selected.
10. Expand **Security** and verify that **Request Filtering** and **Windows Authentication** are installed.

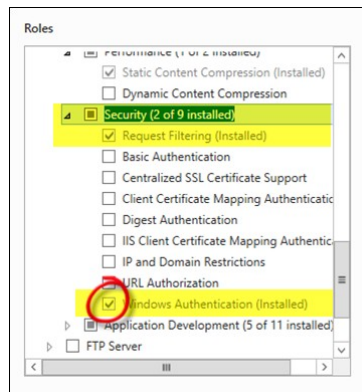


Figure 4.

Copyright 2015, PeopleFluent. All rights reserved. Proprietary and confidential.

11. Expand **Application Development**.

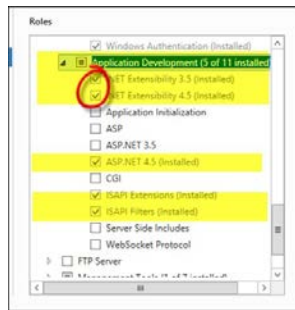


Figure 5.

12. Verify that **.NET Extensibility 3.5** and **.NET Extensibility 4.5** are installed. In addition, verify that **ASP .NET 4.5**, **ISAPI Extensions** and **ISAPI Filters** are installed.

13. In the left pane, select **Features**.

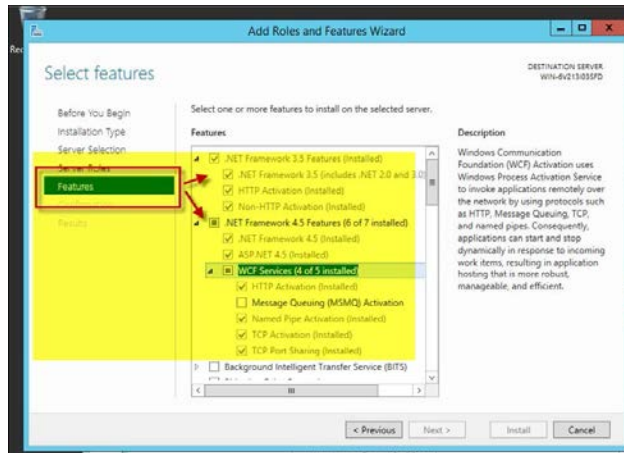


Figure 6.

14. Confirm that the Web server works by opening Internet Explorer and typing <http://localhost>. Your browser should display the IIS server image.



Figure 7.

Configuring Groups

The following groups are required to set up access to OrgPublisher Web Administration.

Note: The **OPWeb_GG** group must be created by an administrator on the Domain Controller.

Creating a Group on the Domain Controller

1. Create a Global Group title **OPweb_GG**.
2. Add the **OrgPublisher Chart Administrator Users** to the global group.

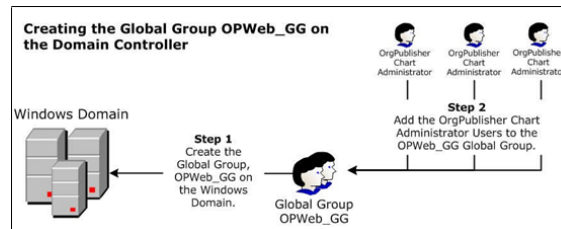


Figure 8.

Creating a Group on the Web Server

Note: The **OPWeb_LG** must be created by an administrator on the server, and must be completed **before** moving on with the installation.

1. Click **Start>All Programs>Administrative Tools>Computer Management**.
2. In the Computer Management dialog, expand **Local Users and Groups**.
3. Select the **Groups** folder.
4. In the **Action** menu, select **New Group**.
5. In the New Group dialog, type **OPWeb_LG** in the **Group Name** field.
6. Click **Add** and select the **Domain Global Group, (OPWeb_GG)** group. Click OK.
7. In the New Group dialog, select **Create**. The **OPWeb_LG** appears in the list of **Local Groups**.

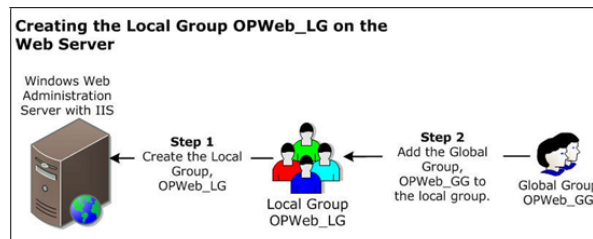


Figure 9.

Installing OrgPublisher Web Administration

1. Launch the OrgPublisher installation program and advance to the Activation Information dialog.
2. Enter your **License Key** and **Registered Company Name**. Click Next.



Figure 10.

Note: We recommend that you use the copy and paste method to input this information exactly as it appears in your license key information to avoid invalid key errors.

The Welcome dialog opens. Click next.

3. The License Agreement dialog opens. Read the agreement and click Agree.
The Registration Information dialog opens.
Type the **Registered user's full name** and the **Registered user's company name**. Click Next.
The Custom Installation Option dialog opens.
4. Select OrgPublisher Custom Install and click Next.

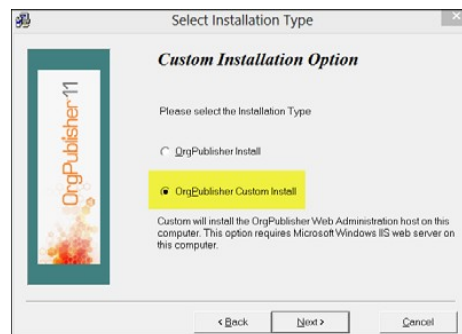


Figure 11.

The Select Web Administration Destination Directory dialog opens.

5. Type **\opweb** at the end of the **c:\inetpub\wwwroot** file name.

Note: Verify that the Web Administration destination directory path reads **c:\inetpub\wwwroot**. If this path is incorrect, OrgPublisher displays an error message when launching Web Administration.

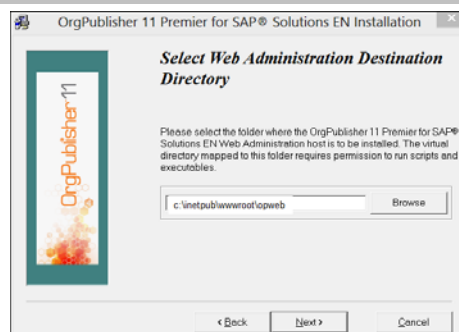


Figure 12.

Click Next. The Enter the Web Administration URL dialog opens.

6. Type **/opweb** at the end of the server name, **HTTP://ServerName**.

Note: Verify that the Web Administration URL reads **HTTP://ServerName/opweb**. The **ServerName** is the name of the server where OrgPublisher is installed. The URL entered here is a virtual path that points to the physical path entered in the previous step.

If you decide to use a different path in step 6, make sure the URL in step 7 matches. If this path is not entered correctly, OrgPublisher displays an error message when launching Web Administration.



Figure 13.

Click Next. The Select Destination Directory dialog opens.

7. Confirm the location, **C:\Program Files (x86)\OrgPubX**.
- Click Next. The application installation begins. When the installation is complete, the Installation Completed dialog opens.
8. Select **Launch OrgPublisher now** to create a DCOM entry. The other item selections are optional.

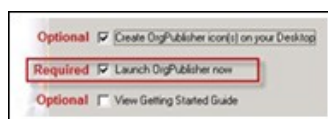


Figure 14.

Note: Launching OrgPublisher is required to create the DCOM entry which is needed later in the OrgPublisher Web Administration installation.

Click **Finish**. The OrgPublisher application opens.

9. Close OrgPublisher.
10. Browse the Web Administration destination directory path, **c:\inetpub\wwwroot\opweb**, entered in step 6 above.

The following folders and files are created in the Web Administration installation:

- **ArchivedCharts** folder
- **PublishedCharts** folder
- **SearchDictionary** folder
- **SourceCharts** folder
- **OPAdmin.htm**
- **OPAdmin.js**
- **OPAdmin.opw**
- **Remoteserver.dll**

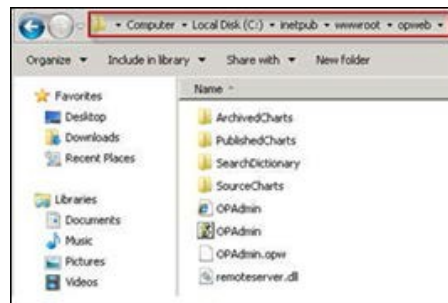


Figure 15.

Setting NTFS Permissions for opweb

1. Navigate to **C:\inetpub\wwwroot**.
2. Right-click on the **opweb** folder and select **Properties**.
3. Select the **Security** tab.
4. Click **Edit**. The permissions for opweb dialog opens.
5. Click **Add**. The Select Users, Computers, Service Accounts, or Groups dialog opens.
6. Click **Locations**. The locations dialog opens.
7. Change the **Location** to **Server**.

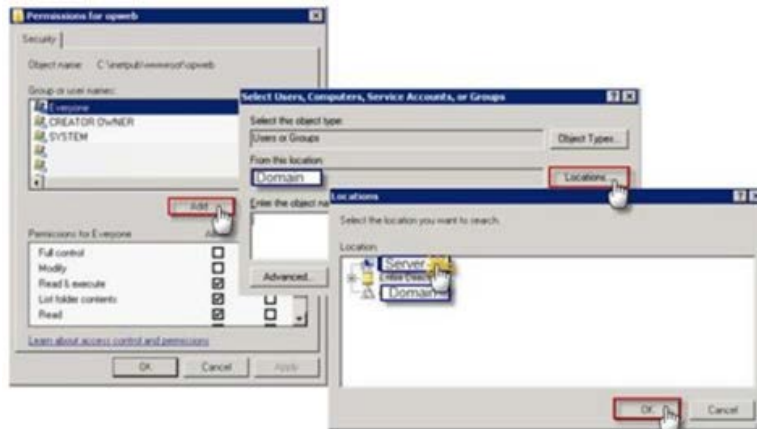


Figure 16.

Click OK.

8. In the Select Users, Computers, Service Accounts, or Groups dialog, click **Advanced**. The Select Users or Groups dialog refreshes to present new options.

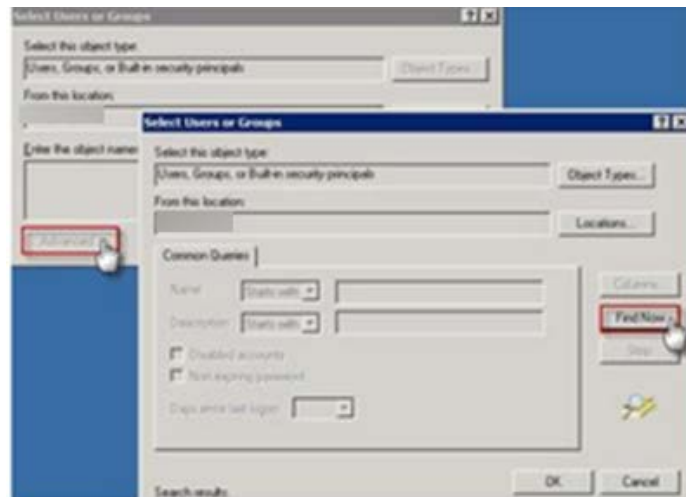


Figure 17.

9. Click **Find Now**.

Copyright 2015, PeopleFluent. All rights reserved. Proprietary and confidential.

PeopleFluent and the PeopleFluent and OrgPublisher logos are trademarks or registered trademarks of PeopleFluent. All other brand and product names are trademarks or registered trademarks of their respective holders.

11/20/2015

10. Select the following groups from the search results:
 - Local **Administrators** group
 - **OPWeb_LG**
 - **Network Service**

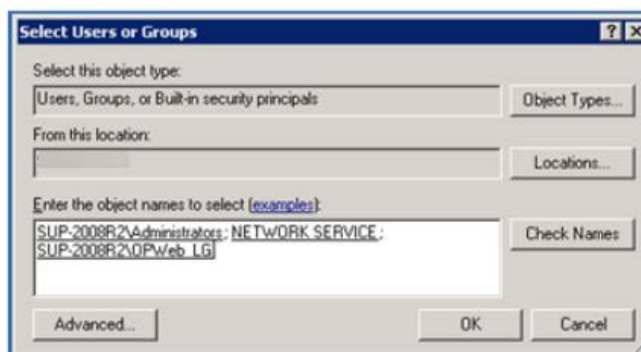


Figure 18.

Click OK to add the groups.

11. Set the following NTFS permissions:
 - Local Administrators group – **Full Control**
 - OPWeb_LG – **Modify**
 - Network Service – **Read and Execute**

Set NTFS Permissions for SourceCharts

1. Navigate to the **C:\inetpub\wwwroot\opweb**.
2. Right-click on the **SourceCharts** folder and select **Properties**.
3. Repeat steps 3 – 11 in the [Set NTFS Permissions for opweb](#) procedure, including the group permissions.
4. Remove the **Everyone** group in the **SourceCharts** folder.

Set NTFS Permissions for ArchivedCharts

1. Navigate to **C:\inetpub\wwwroot\opweb**.
2. Right-click on the **ArchivedCharts** folder and select **Properties**.
3. Repeat steps 3 – 11 in the [Set NTFS Permissions for opweb](#) procedure, including the group permissions.
4. Remove the **Everyone** group in the **ArchivedCharts** folder.

Set NTFS Permissions for SearchDictionary

1. Navigate to **C:\inetpub\wwwroot\opweb**.
2. Right-click on the **SearchDictionary** folder and select **Properties**.
3. Repeat steps 3 – 11 in the [Set NTFS Permissions for opweb](#) procedure, including the group permissions.
4. Remove the **Everyone** group in the **SearchDictionary** folder.

Set NTFS Permissions for PublishedCharts

1. Navigate to **C:\inetpub\wwwroot\opweb**.
2. Right-click on the **PublishedCharts** folder and select **Properties**.
3. Repeat steps 3 – 11 in the [Set NTFS Permissions for opweb](#) procedure.
4. Select the following groups from the search results:
 - Local **Administrators** group
 - **OPWeb_LG**
 - **Network Service**
 - **Users** group

Click OK to add groups.

5. Set the following permissions for the groups:
 - Local Administrators group – **Full Control**
 - OPWeb_LG – **Modify**
 - Network Service – **Read and Execute**
 - Users group – **Read and Execute**

Note: You are not required to remove the **Everyone** group from the **PublishedCharts** folder. However, if you choose to keep the group, you must remove **Write** permissions, if enabled. The **Everyone** group can retain **Read and Execute** permissions in this folder.

Web Administration NTFS Rights Graphic

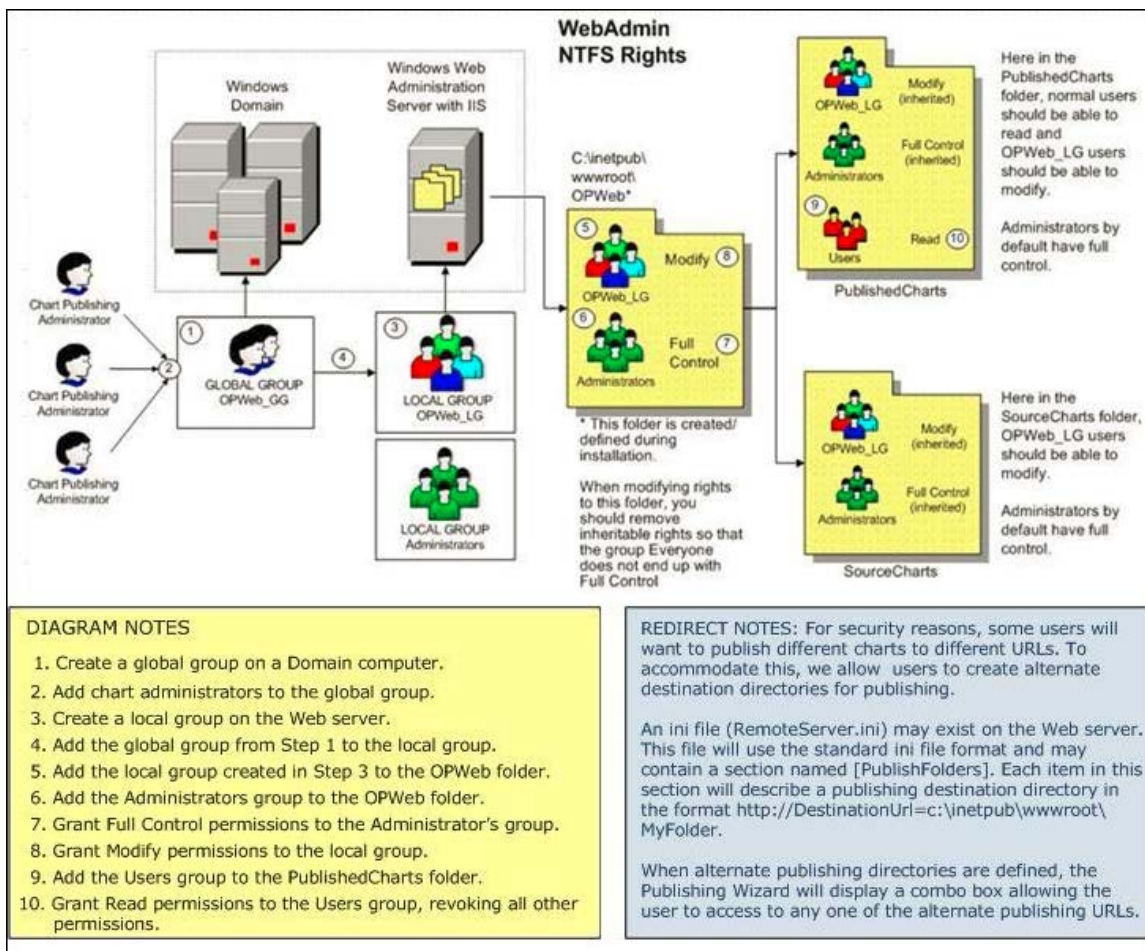


Figure 19.

Configuring Internet Information Services (IIS7)

Create the OrgPublisher Application Pool

1. Click **Start**, **All Programs**, and **Administrative Tools**.
2. Select **Internet Information Services (IIS) Manager**.
3. Click the plus (+) sign next to your server name to display Application Pools and Sites.
4. Right-click on **Application Pools** and select **Add Application Pool**.



Figure 20.

The Add Application Pool dialog opens.

5. Type OrgPublisher in the **Name** field.



Figure 21.

Click OK. The Application Pools window opens.

6. Right-click on **OrgPublisher** in the **Name** column, and select **Set Application Pool Defaults**.



Figure 22.

The Advanced Settings dialog opens.

- In the **General** section, set **Enable 32-bit Applications** to **True**.

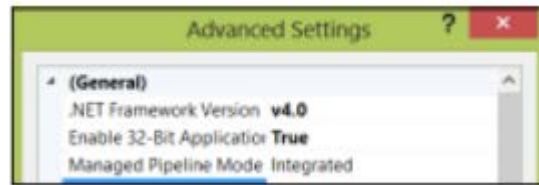


Figure 23.

Click OK. The Application Pools window reopens.

- In the **Connections** pane on the left, expand **Sites** then expand **Default Web Site**.
- Right-click the **opweb** virtual folder, and select **Convert to Application**.

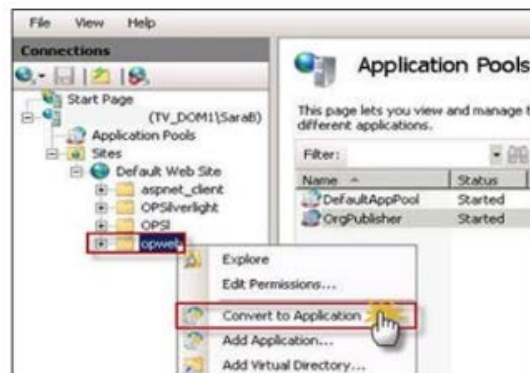


Figure 24.

The Add Application dialog opens.

- Click **Select**. The Select Application Pool dialog opens.
- Change the Application pool to **OrgPublisher**.

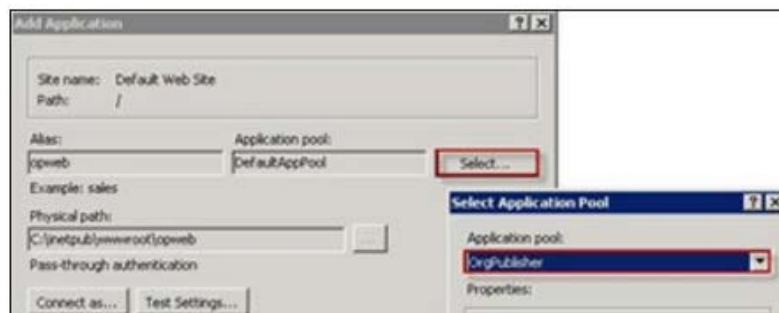


Figure 25.

Click OK. Click OK again to close the Add Application pool dialog.

The **Connections** pane in the Application Pools window displays the opweb application.

Setting Up ISAPI Extensions in IIS

1. In the **Connections** pane of the Application Pools window, select your server.
2. In your server **Home** window, double-click **ISAPI and CGI Restrictions**.

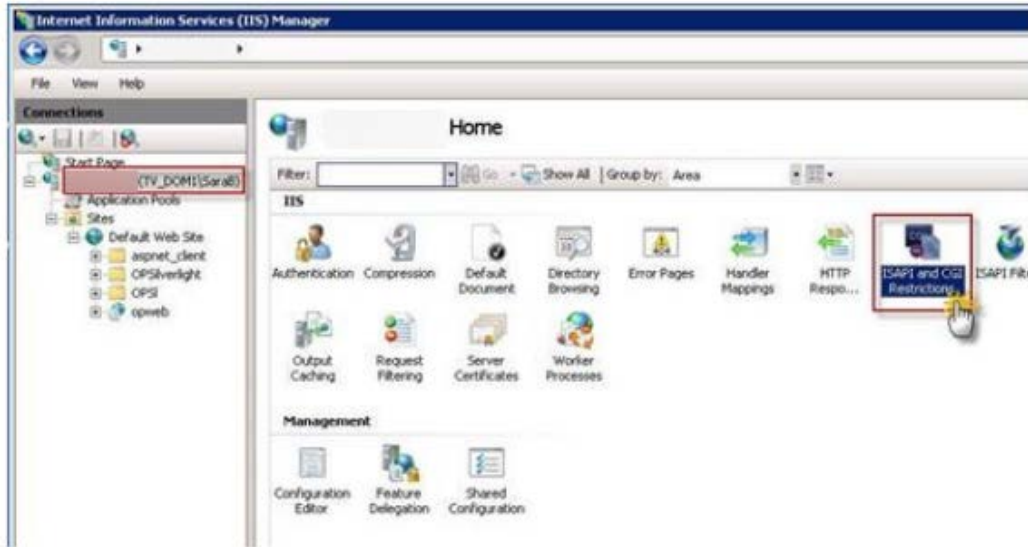


Figure 26.

3. The ISAPI and CGI Restrictions window opens. In the **Actions** pane on the right side, click **Edit Feature Settings**.



Figure 27.

The Edit ISAPI and CGI Restrictions Settings dialog opens.

4. Select **Allow unspecified ISAPI modules**.



Figure 28.

Click OK.

Setting Up Handler Mappings in IIS

1. In the **Connections** pane of your Home window, select your server name.
2. Double-click **Handler Mappings** in the **IIS** section in the center pane.

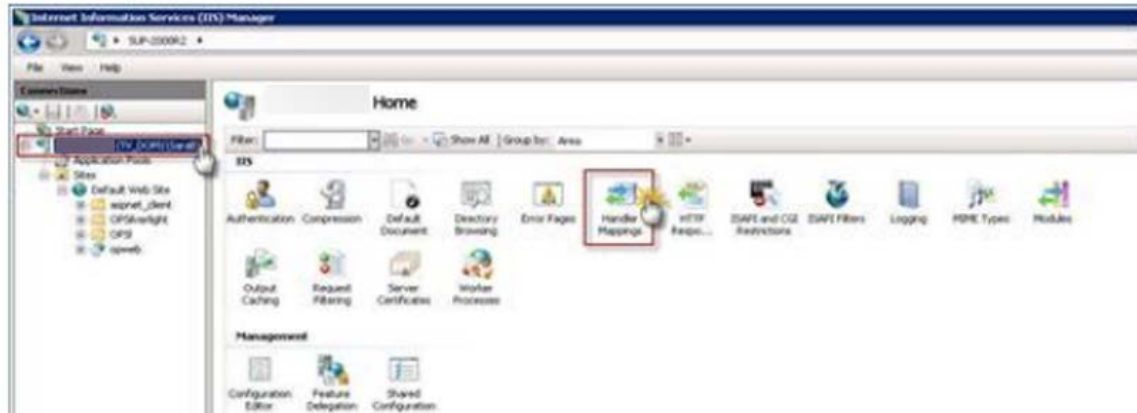


Figure 29.

The Handler Mappings window opens.

3. If the **ISAPI-dll** handler is in the **Disabled** list, right-click on **ISAPI-dll** and select **Edit Feature Permissions**.

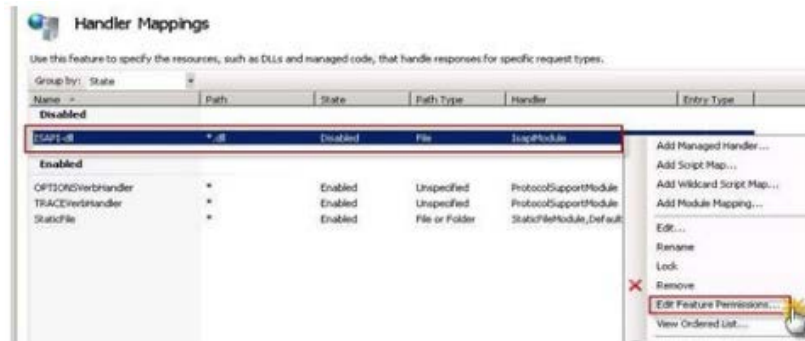


Figure 30.

The Edit Feature Permissions dialog opens.

4. Select **Execute** and click OK.



Figure 31.

The Handler Mappings window opens, displaying **ISAPI-dll** in the **Enabled** list.

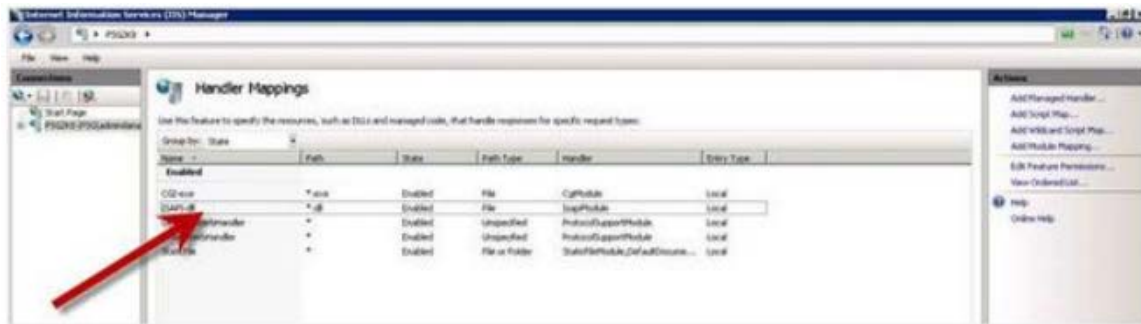


Figure 32.

Setting Up IIS Authentication

1. In the **Connections** pane, select the **opweb** virtual directory folder. The **opweb Home** window opens.
2. Double-click **Authentication** in the **IIS** section of the center pane.



Figure 33.

The Authentication window opens.

3. Right-click in the **Status** column to enable or disable authentication status, as noted below:
 - Anonymous Authentication – **Disabled**
 - Windows Authentication – **Enabled**



Figure 34.

4. In the **Connections** pane, expand **opweb** and select the **SourceCharts** folder. The SourceCharts Home window opens in the center pane.
5. Double-click **Authentication** in the **IIS** section.



Figure 35.

The Authentication window opens in the center pane.

6. Right-click in the **Status** column to enable or disable authentication status, as noted below:
 - Anonymous Authentication – **Disabled**
 - Windows Authentication – **Enabled**

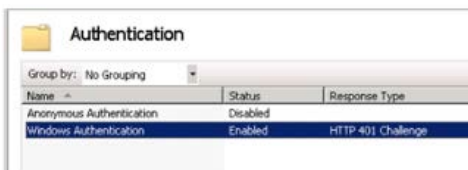


Figure 36.

7. In the **Connections** pane, select the **ArchivedCharts** folder under **opweb**.
8. Double-click **Authentication** in the **IIS** section.



Figure 37.

9. Right-click in the **Status** column to enable or disable authentication status, as noted below:
 - Anonymous Authentication – **Disabled**
 - Windows Authentication - **Enabled**



Figure 38.

10. In the **Connections** pane, select the **SearchDictionary** folder under **opweb**.
11. Double-click **Authentication** in the **IIS** section.



Figure 39.

12. Right-click in the **Status** column to enable or disable authentication status, as noted below:
 - Anonymous Authentication – **Disabled**
 - Windows Authentication – **Enabled**



Figure 40.

13. In the **Connections** pane, select the **PublishedCharts** folder under **opweb**.
14. Double-click **Authentication** in the **IIS** section.
15. Right-click in the **Status** column to enable or disable authentication status, as noted below:
 - Anonymous Authentication – **Disabled**
 - Windows Authentication – **Enabled**



Figure 41.

Setting the MIME Type

1. In the **Connections** pane, select **opweb**.
2. Double-click on **MIME Types** in the **IIS** section. The MIME Types window opens.

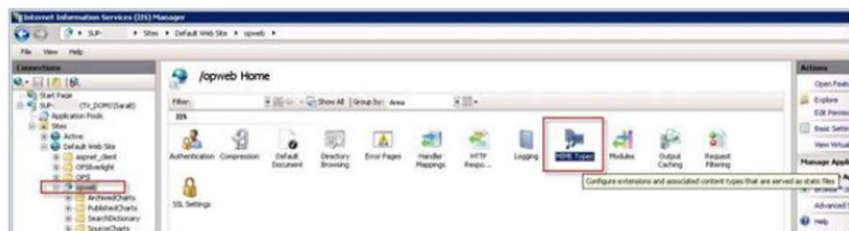


Figure 42.

3. In the **Actions** pane on the right, click **Add**. The Add MIME Type dialog opens.
4. Type **.ocp** in the **File name extension** field.

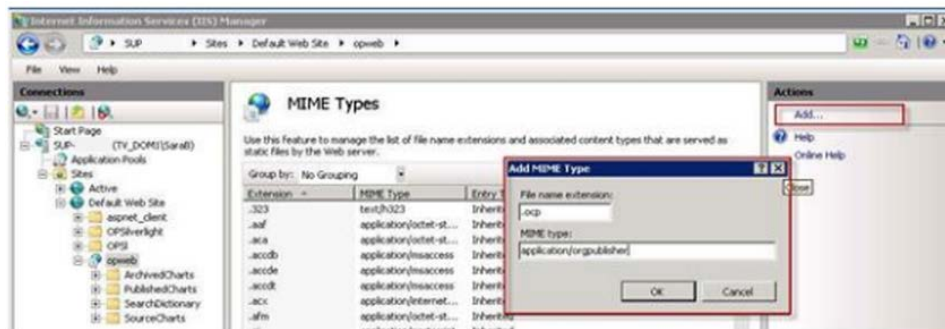


Figure 43.

5. Type **application/orgpublisher** in the **MIME type** field. Click OK.

Copyright 2015, PeopleFluent. All rights reserved. Proprietary and confidential.

PeopleFluent and the PeopleFluent and OrgPublisher logos are trademarks or registered trademarks of PeopleFluent. All other brand and product names are trademarks or registered trademarks of their respective holders.

6. In the **Connections** pane, click on the **PublishedCharts** folder under **opweb**.
7. Double-click **MIME Types** in the **IIS** section. The MIME Type window opens.

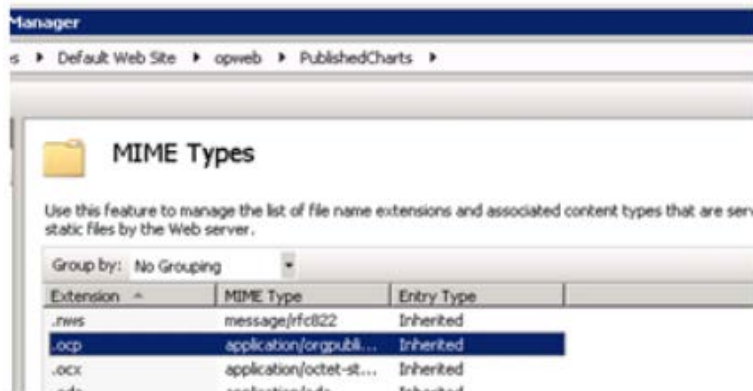


Figure 44.

8. Confirm the **.ocp** appears in the **MIME Type** list. If it is not in the list, repeat steps 3 – 5 to enable the **.ocp MIME Type** in the **PublishedCharts** folder.

Setting Up DCOM Permissions

Note: Start OrgPublisher from the server on which it is installed prior to establishing the DCOM setting. This action loads OrgPublisher into DCOM.

1. Click **Start** in the Task Bar and type **mmc-32** in the open field. Click OK.



Figure 45.

2. In the Console window, select **File** then **Add/Remove Snap-in**.

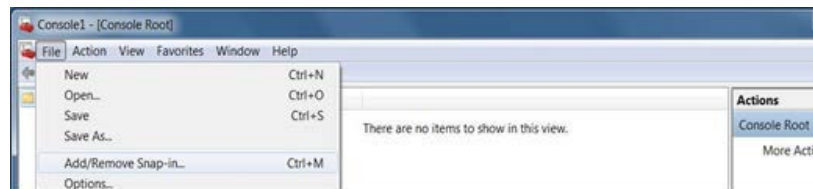


Figure 46.

3. In the Add or Remove Snap-ins dialog, select **Component Services** from the list and click **Add**.

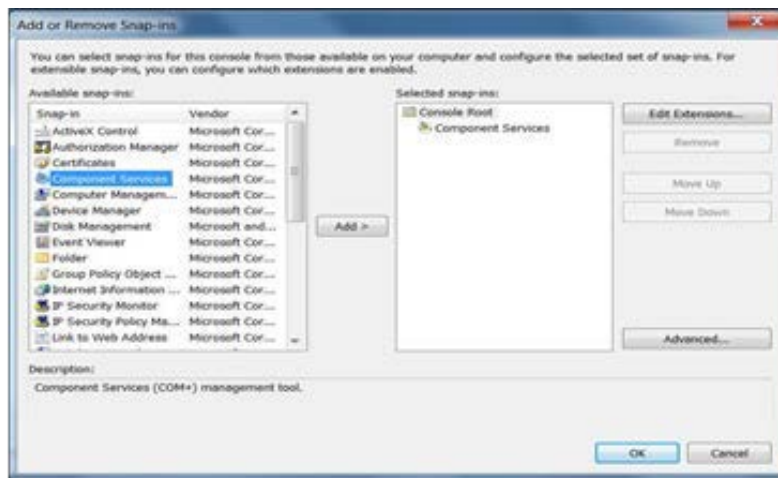


Figure 47.

Click OK. The Component Services window opens.

Note: Click **Yes** if you receive a CLSID Warning message.

- In the left pane, expand **Component Services**, **Computers**, and **My Computer**. Select **DCOM Config**.

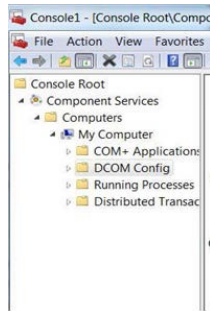


Figure 48.

- Right-click on **OrgPublisher X Document** and select **Properties**.

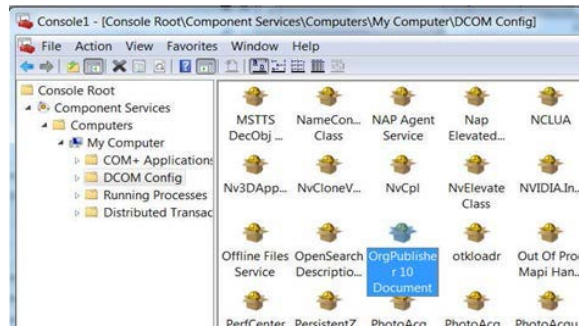


Figure 49.

Note: If you are upgrading from a previous OrgPublisher version, that version number is displayed. Set permissions on that DCOM entry.

The OrgPublisher X Document properties dialog opens.

- Select the **Security** tab.

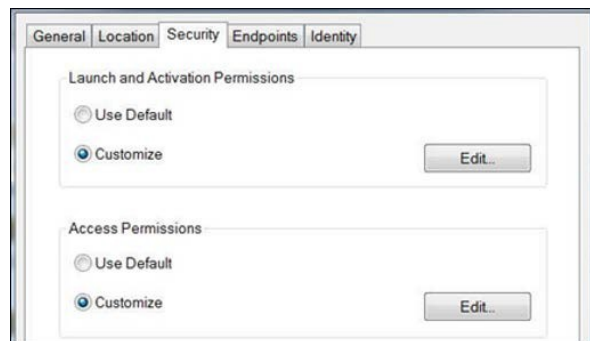


Figure 50.

- In the **Launch and Activation Permissions** section, click **Edit**.



Figure 51.

- Click **Add** to open the Select Users, Computers, Service Accounts, or Groups dialog.
- Click **Locations** to open the Locations dialog.
- Change the Location to **Server**. Click OK.

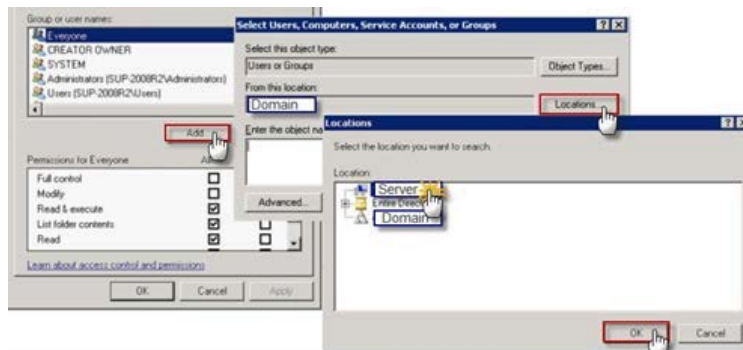


Figure 52.

- In the Select Users or groups dialog, click **Advanced**. The dialog refreshes to display additional options.
- Click **Find Now**.

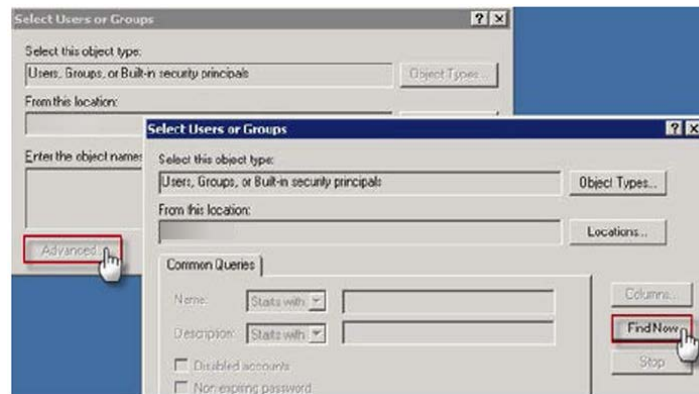


Figure 53.

- Add the following groups:
 - Local **Administrators**
 - Local **Interactive**

- Local **IIS_IUsers**
- Local **Network**
- Local **Network Services**
- Local **Opweb_LG**
- Local **System**

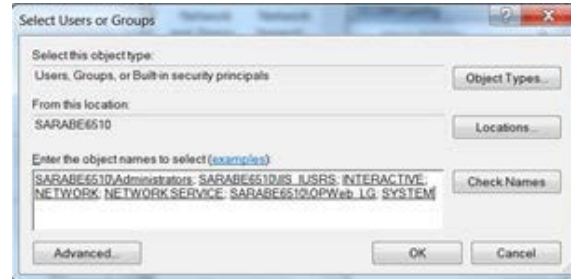


Figure 54.

14. Click OK to add the groups.
15. Enable the following Access Permissions:
 - Local Administrators – **Local Access**
 - Local Interactive – **Local Access**
 - Local IIS_IUsers – **Local Access**
 - Local Network – **Local Access**
 - Local Network Services – **Local Access**
 - Local Opweb_LG – **Both options**
 - Local Systems – **Local Access**
16. Click OK to close the Access Permissions dialog. Click OK again to close the OrgPublisher X Document dialog.

Testing OrgPublisher Web Administration

The following test helps you determine if Web Administration is configured correctly. If you can perform the tests successfully, the OrgPublisher Web Administration installation completed successfully.

If errors display while testing, review the following items to determine if additional settings may be needed.

- [NTFS permissions](#)
- [IIS configurations](#)
- [DCOM settings](#)
- Troubleshooting Tips

If you still cannot successfully complete the tests, please contact [Product Support](#) for further assistance.

Prerequisites for Testing Web Administration

- We recommend that you test Web Administration on a workstation rather than on a server.
In addition, the server administrator may want to add themselves to the **OPWeb_LG** group for the purpose of accessing Web Administration with the same rights as the chart administrators.
- Users must have a Web Administration PluginX file, **orgpub32.ocx**, in order to open OrgPublisher Web Administration.
Users are prompted to download the PluginX from the Web site when accessing the Web Administration URL for the first time.
- Users must be administrators on their own machines in order to install the PluginX file.
- More information on PluginX controls can be found in the OrgPublisher Implementation Guide on the PeopleFluent Customer Community site.

Testing Web Administration

1. Open Internet Explorer and type the OrgPublisher Web Administration URL, <http://<servername>/opweb/Opadmin.htm>.

Note: <servername> is a placeholder for the name of the server on which OrgPublisher is installed.

2. If prompted, install the Web Administration PluginX file from the Web site. OrgPublisher Web Administration opens.

Click OK if you see a prompt that says No charts exist yet.

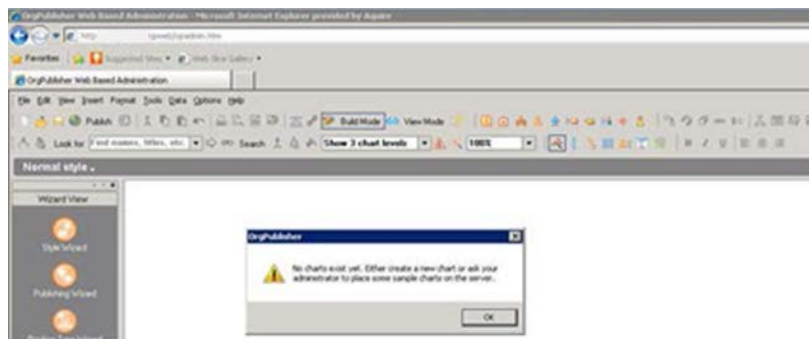


Figure 55.

Prerequisites for testing Web Administration Publishing to EChart Rich Client

- We recommend that you test Web Administration on a workstation rather than on a server.

In addition, the server administrator may want to add themselves to the **OPWeb_LG** group for the purpose of accessing Web Administration with the same rights as the chart administrators.

- Users must have a PluginX file viewer, **orgpub32.ocx**, in order to open an OrgPublisher EChart rich client chart.
Users are prompted to download the PluginX from the Web site when accessing the chart link for the first time.
- Users must be administrators on their own machines in order to install the PluginX file.
- More information on PluginX controls can be found in the OrgPublisher Implementation Guide on the PeopleFluent Customer Community site.

Test Publishing an EChart Rich Client Chart

1. Access the Web Administration URL, <http://<servername>/opweb/opadmin.htm>, and select **File**, then **New**.
2. Click **New** in the Select a Chart to Open dialog.

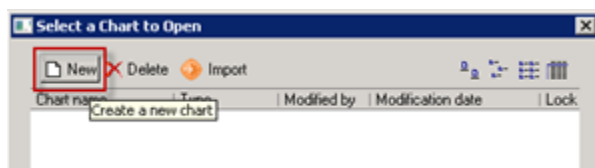


Figure 56.

The New Chart Wizard opens.

3. Select **Organizational chart** and click Next.

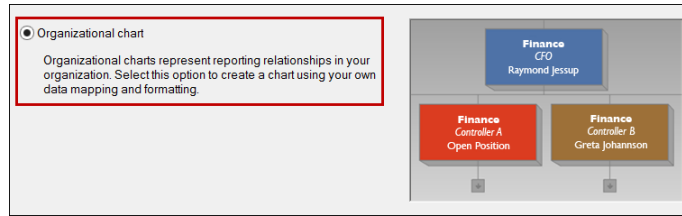


Figure 57.

The Select a data source dialog opens.

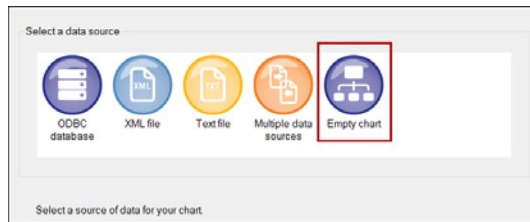


Figure 58.

4. Select **Empty chart** and click Next.

The Finish dialog opens.

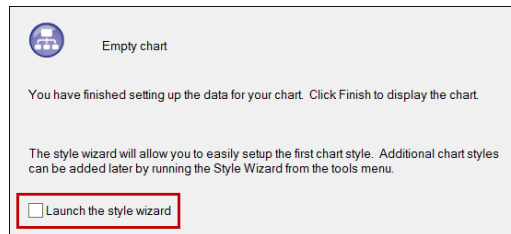


Figure 59.

5. Clear the check box to **Launch the style wizard** and click **Finish**.

The OrgPublisher application opens to a blank Chart View.

6. In the Insert toolbar, click the Insert box containing a person button, .

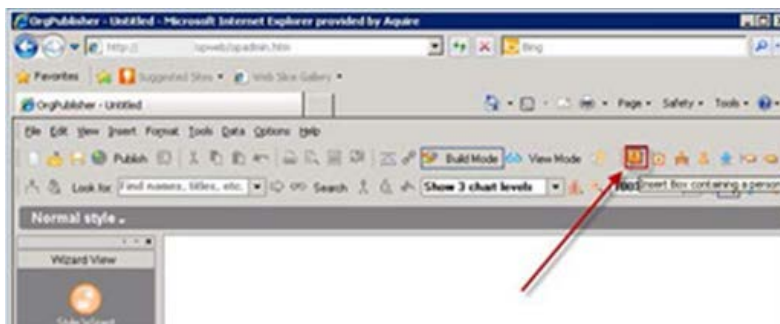


Figure 60.

7. Drop the box in the chart white space.

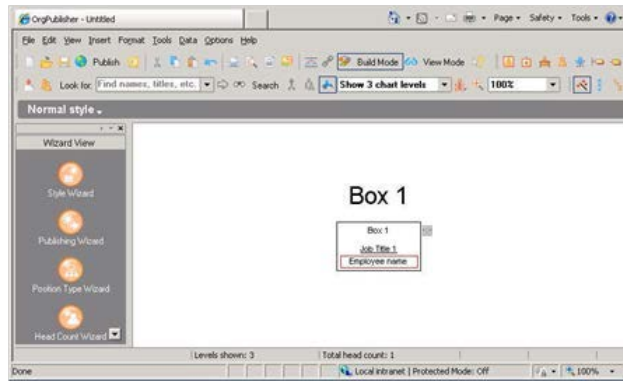


Figure 61.

A chart box appears with default information.

8. Click the Publish button  in the toolbar.

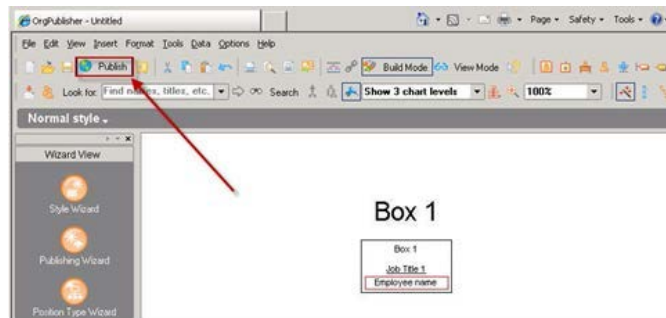


Figure 62.

The Publishing Wizard opens.

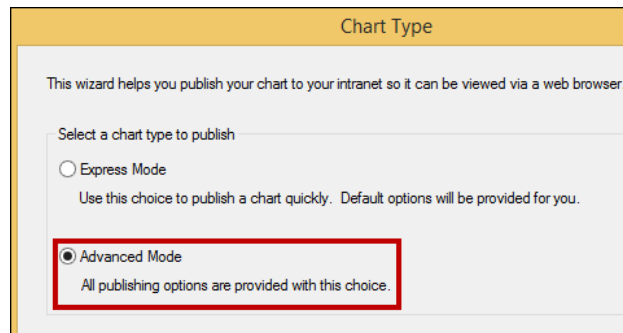


Figure 63.

9. Select **Advanced Mode** and click Next. Click Next again.

The Name dialog opens.

The dialog box is titled "Name". It contains the following text: "The assigned name can be any combination of letters and numbers." and "It is recommended that the name meaningfully convey a description of the Orgchart to be published. However, the name need not display any publishing schedule or time information as that information will also be available in another display field." At the bottom, there is a label "Name:" followed by a text input field containing the text "Pacific Eastern".

Figure 64.

10. Type the name of your published test chart name and click Next.
 The Publishing type dialog opens.

The dialog box is titled "Publishing Type". It contains the text "Please select type of publishing you would like". There are two radio button options:

- Interactive Org Chart**: Publishes a chart that supports complex searching, drilling, and high quality printing. This includes PluginX and EChart publishing.
- Org Chart Document**: Publishes a document that has limited searching, drilling, and printing. This includes PDF and Graphic publishing.

 The "Interactive Org Chart" option is highlighted with a red rectangular box.

Figure 65.

11. Select the **Interactive Org Chart** radio button and click Next.
 The Interactive type dialog opens.

The dialog box is titled "Interactive Type". It contains the text "Please select an interactive publishing type". There are four radio button options:

- PluginX**: Publishes a chart that can be viewed using Microsoft Internet Explorer.
- EChart**: Publishes an extremely large, secure, or HTML-only chart. Supports Microsoft Internet Explorer. Requires an ISAPI-compliant web server.
- Cross Browser**: Publishes the chart to be viewed across platforms.
- iPad**®: Publishes employee data to OrgPublisher Executive.

 The "EChart" option is highlighted with a red rectangular box.

Figure 66.

12. Select the **EChart** radio button and click Next.
The Publish Location dialog opens.

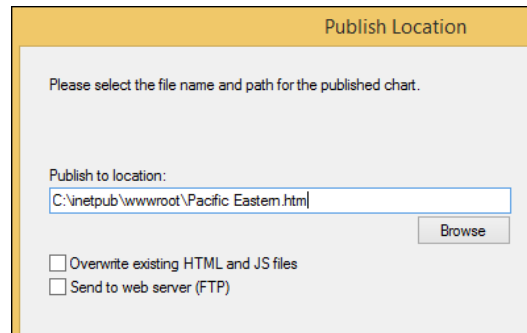


Figure 67.

13. Type or **Browse** to the **Publish to location** folder for the chart and click Next.
The Client Type dialog opens.

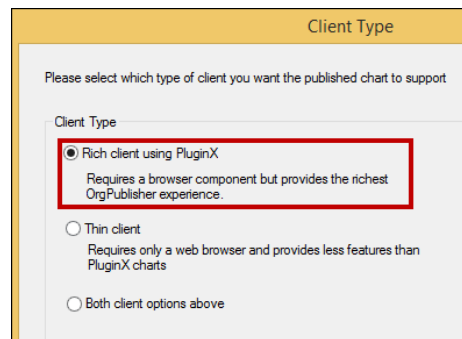


Figure 68.

14. Select the **Rich client using PluginX** radio button and click Next.
The Virtual Directory dialog opens.

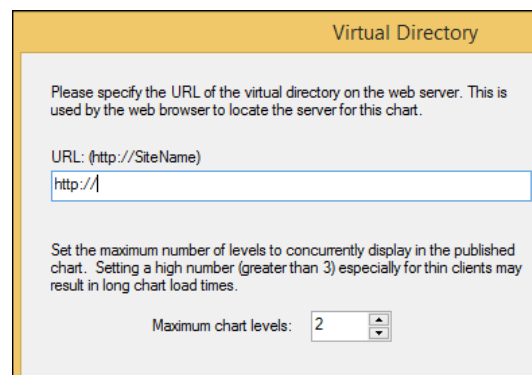


Figure 69.

15. Type the virtual path to the PublishedCharts folder, typically, **http://<servername>/opweb/PublishedCharts**. Click Next.

16. Click Next through the rest of the wizard dialogs until you reach the Finish dialog.
17. Accept the default option of **Publish now**.
The Enter a Chart Name dialog opens.

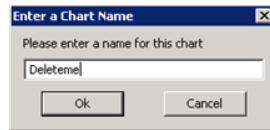


Figure 70.

18. Type a name for the chart. It can be the same as the publishing definition in Step 10 in this procedure or something different. Click OK.
The EChart Link Summary dialog opens.
19. Click the link to open the EChart in the browser.



Figure 71.

20. If prompted, install the PluginX viewer using the displayed link to the Web page.
Once the PluginX is installed, the OrgPublisher chart opens.

Web Administration Next Steps

Review the items noted below so that your chart administrators have what they need to begin using charts with Web Administration.

- Provide the following links to the chart administrators:
 - Web Administration URL
(Example: **http://<servername>/opweb/opadmin.htm**)
 - PublishedCharts URL
(Example: **http://<servername>/opweb/publishedcharts**)
- Assistance in downloading the Web Administration PluginX will be required for any chart administrator who is not an administrator on their own machine.
- A system DSN must be created on the server where OrgPublisher is installed if a chart administrator is using an ODBC connection to a database.
- Mapping of text files must be done by an administrator on the server through the OrgPublisher client if a chart administrator uses text files or CSV files that are not in the standard OrgPublisher field order.

Note: If the server administrator needs to assist with mapping text files in OrgPublisher, we recommend that a default chart file be created one time on the server using the OrgPublisher client. Chart administrators can then use the default file as the basis for creating new charts by following these steps:

1. Open the default file.
2. Select **File, Save As** and create a new chart name for this file.
3. The data connection remains the same and can now be used to create new organizational charts.

- A network share to the **SourceCharts** folder is required if a chart administrator needs access to import and overwrite existing data files from their desktop to the SourceCharts folder. The Web Administration interface cannot be used for this purpose. Approving network share folder access is the decision of your IT department and is not a part of the standard OrgPublisher Web Administration installation.
- A network share to the **PublishedCharts** folder is required if a chart administrator needs to copy formatting files (OTM files) to use with new chart data files. The Web Administration interface cannot be used for this purpose. Approving network share folder access is the decision of your IT department and is not a part of the standard OrgPublisher Web Administration installation.

Troubleshooting Tips

- If you see an Internet Explorer window with a gray bar at the top but no chart, set a [MIME type](#) of .OCP on the PublishedCharts folder.



Figure 72.

- If you receive the error, “Unable to contact the remote server .dll at this URL”, the paths to the virtual directory and URL were, likely, not correct during installation, or the permissions were not set.

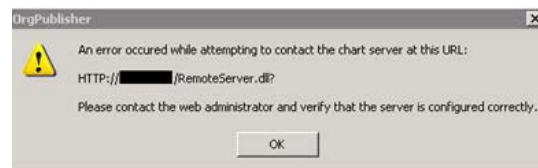


Figure 73.

This may require a reinstallation of Web Administration by following this guide.

- If a chart administrator or end user sees a blank Internet Explorer screen with a red X in the upper-left corner, this indicates a problem with installing and registering the ActiveX control (PluginX).

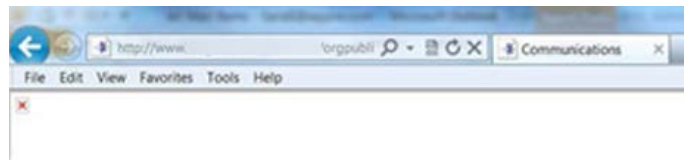


Figure 74.

Installing ActiveX controls requires administrative rights on the workstation. Your IT group can request MSI scripts to assist in pushing out the plugins by contacting [Product Support](#). Include the full version number of OrgPublisher installed on the server. (In OrgPublisher, click **Help** in the menu, then **About OrgPublisher**.)

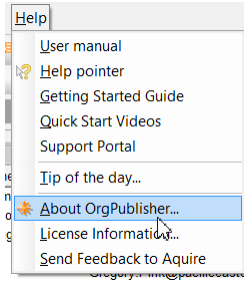


Figure 75.

- If you receive the error, “Unable to instantiate OrgPub32 as an automation server”, there may be a permissions issue.



Figure 76.

Verify that the [DCOM permissions](#) (mmc-32) are correct. If the error still occurs, adjust settings to include the following DCOM permission. In the OrgPublisher X Document dialog **Identity** tab, select **Launching User**. If the error persists, this may require a reinstallation of Web Administration, following this guide.

- Understanding HTTP error messages and their associated status codes is important when you need to troubleshoot IIS. A few common errors on the client side (4xx error) and server side (5xx error) are listed below.

Error Code	Definition
400	Bad Request: The server cannot service the request, usually because of an incorrect URL.
401	Unauthorized: The user’s credentials were not accepted by the authorization process.
M403	Forbidden: The request could not be serviced for a number of reasons, even though the user was authenticated.
404	Not Found: The server cannot locate the requested file.
405	Method Not Allowed: The client incorrectly issued an HTTP GET request when an HTTP POST request should have been issued.
406	Not Acceptable: The requested file is not supported by the client.
407	Proxy Authentication Required: The client has to authenticate with the proxy server before its request can be serviced.
410	Gone: The server no longer has the requested file.
500	Internal Server Error: Indicates a typical server side error.

501	502 Not Implemented: The server does not support the HTTP method requested by the client.
502	Bad Gateway: An invalid response was received by the upstream server for which this server is a gateway.
503	Service Unavailable: The server does not support the service requested by the client.